

A Comparison of Automobile Insurance Regimes in Canada

Rose Anne Devlin

Volume 86, numéro 1-2, juin 2019

URI : <https://id.erudit.org/iderudit/1062464ar>

DOI : <https://doi.org/10.7202/1062464ar>

[Aller au sommaire du numéro](#)

Éditeur(s)

Faculté des sciences de l'administration, Université Laval

ISSN

1705-7299 (imprimé)

2371-4913 (numérique)

[Découvrir la revue](#)

Citer ce document

Devlin, R. A. (2019). A Comparison of Automobile Insurance Regimes in Canada. *Assurances et gestion des risques / Insurance and Risk Management*, 86(1-2), 55-96. <https://doi.org/10.7202/1062464ar>

Résumé de l'article

This article compares and contrasts automobile insurance provisions across Canadian jurisdictions, with particular emphasis on comparing how British Columbia (BC) fares relative to other provinces. A brief discussion of the different automobile insurance regimes is provided, as well as the mandated packages in each province. Price quotes are obtained by jurisdiction for the mandated package as well as for enhanced packages, for a hypothetical driver (either male or female) with a driving record that is good or poor, who is 45 years of age and drives a Honda Civic. We find that prices in Vancouver, BC are in the middle of the pack, and are much lower than in Toronto, Ontario for a driver with a good record. BC average prices are similar to those in Saskatchewan and Manitoba. Loss ratios vary quite a bit over the period 2011-2015, with no clear pattern except that they are always higher in public regimes than private ones. Because these ratios fluctuate from year to year, no one single province has performed consistently or significantly better than the others. One must be very careful when drawing hard and fast conclusions because of the differences in insurance packages across provinces and the aggregated and limited nature of much of the available data. Four conclusions are notable: (i) Automobile prices charged in BC are in line with those of Manitoba, (ii) a driver in Vancouver pays significantly less than an otherwise comparable driver in Toronto, (iii) in the private system, Ontario has the lowest loss ratios while, in the public system, there is no discernable, stable, relationship across the jurisdictions, and (iv) average claim costs cannot be compared across regimes.

A COMPARISON OF AUTOMOBILE INSURANCE REGIMES IN CANADA

Rose Anne DEVLIN¹, University of Ottawa

■ ABSTRACT

This article compares and contrasts automobile insurance provisions across Canadian jurisdictions, with particular emphasis on comparing how British Columbia (BC) fares relative to other provinces. A brief discussion of the different automobile insurance regimes is provided, as well as the mandated packages in each province. Price quotes are obtained by jurisdiction for the mandated package as well as for enhanced packages, for a hypothetical driver (either male or female) with a driving record that is good or poor, who is 45 years of age and drives a Honda Civic. We find that prices in Vancouver, BC are in the middle of the pack, and are much lower than in Toronto, Ontario for a driver with a good record. BC average prices are similar to those in Saskatchewan and Manitoba. Loss ratios vary quite a bit over the period 2011-2015, with no clear pattern except that they are always higher in public regimes than private ones. Because these ratios fluctuate from year to year, no one single province has performed consistently or significantly better than the others. One must be very careful when drawing hard and fast conclusions because of the differences in insurance packages across provinces and the aggregated and limited nature of much of the available data. Four conclusions are notable: (i) Automobile prices charged in BC are in line with those of Manitoba, (ii) a driver in Vancouver pays significantly less than an otherwise comparable driver in Toronto, (iii) in the private system, Ontario has the lowest loss ratios while, in the public system, there is no discernable, stable, relationship across the jurisdictions, and (iv) average claim costs cannot be compared across regimes.

INTRODUCTION

This article compares and contrasts automobile insurance provisions across Canadian jurisdictions, with a particular emphasis on British Columbia (BC). A brief discussion of the different automobile insurance regimes in Canada is provided, as well as the mandated packages in each province.

Good data are very difficult to obtain in any one jurisdiction let alone across all of the provinces in Canada. Several compromises had to be made. For instance, the Quebec data were simply not comparable to the other jurisdictions on several fronts, and hence had to be eliminated. Data from the General Insurance Statistical Agency (GISA) has been used for the six provinces with private automobile insurance regimes and these data were only available from 2011 to 2015. These data are reasonably comparable across these provinces but obtaining comparable data from the public provinces was complicated. In this respect, caution has to be taken throughout this report.

Insurance prices were obtained largely through a price-quote agency, as well as through direct contact with various firms. There was no attempt to put any particular regime in a better light than others. After much thought and several preliminary investigations, it was decided to let the representative driver be a reasonably average one—45 years of age, driving a Honda Civic, employed, yielding price quotes that are indicative of what one would be facing in the different provinces.

This article is structured as follows. It starts with a review of the compulsory insurance packages mandated in each regime. While the list of benefits accompanying these packages is very similar, quite a bit of variation is seen in the details of these benefits across provinces. This review groups provinces as liability or no-fault regimes, and as private and public provision. The next section provides data on the price of automobile insurance by province (except Quebec). Quotes were obtained from a variety of companies, especially in the private regimes. Huge variations were found in prices. When comparing someone living in Toronto to the same person in Vancouver, a good driving record resulted in a much lower price in BC than in Ontario. The third section compares costs across public and private regimes. Intra-regime comparisons are much more reliable than inter-regime ones. That being said, private regimes had lower loss ratios in general when compared to public ones. The BC regime is reasonably comparable to the other two public systems in this regard. It is not possible to compare average claim costs across public and private regimes because, among other

reasons, of the way in which claims are counted. A fourth section examines some of the factors influencing demand for insurance, especially the number of registered vehicles per capita on the road. Alberta and Saskatchewan stand out as having the highest and second highest number, respectively. BC is in the middle of the pack.

There is a slight upward trend across the board in this number. Fatal accidents per registered vehicle, displays an overall downward trend. Finally, a few words are added about the public versus private provision debate. Overall, there is remarkably little empirical work done on this issue, with one serious undertaking for Canada done in 1976. Not surprisingly, there is no clear cut answer as to which regime is better: the public regime is likely to reap economies of scale and hence have lower costs, but the private one is likely to provide a larger range of products. A few overall conclusions are discussed in the last section.

1. A BRIEF REVIEW OF AUTOMOBILE INSURANCE IN CANADIAN PROVINCES

A minimum level of automobile insurance coverage is mandated and compulsory in every jurisdiction in Canada. Automobile insurance regimes can be described as being based primarily upon liability-based or no-fault-based rules, and can be described as being publicly or privately provided. Six provinces have purely private provision (subject always to public regulations), and four have public monopoly provision (they are really 'hybrid' systems insofar as private companies can provide insurance beyond the basic mandated package; Quebec is an outlier insofar as it has publicly provided insurance for bodily injuries, and privately provided insurance for property damages).

Each province mandates the minimum requirements for an automobile insurance policy. These are described in the Appendix tables A1: table A1a details the requirements in the private provinces and table A1b details the same for the public provinces. While the list of benefits provided in all jurisdictions is more or less the same, there are differences across the regimes in terms of amounts and details. Tables A1a and b reveal, for instance, differences in the amount of medical care provided in the event of an accident, death and survivor benefits, and income replacement rules, across the jurisdictions. It is important to look at the significant differences across provinces in terms of the minimum or basic insurance package, because these will affect the minimum price of insurance.

a) Liability-Based Vs No-Fault-Based Automobile Insurance Regimes

Under a liability regime, damages incurred by not-at-fault victims of accidents are recovered from at-fault drivers; drivers thus take out third-party liability insurance to cover these costs in the event of an at-fault accident. Tables A1a and A1b reveal that all provincial jurisdictions in Canada mandate third-party coverage. If an insurance package were comprised *only* of third-party liability provisions, then those who suffered losses as a result of the fault of others, would be entitled to compensation by the at fault drivers, but the at-fault drivers would not receive any indemnification for own injuries or damages. But this does not describe the situation in Canadian provinces. All automobile insurance regimes in Canada except for Newfoundland and Labrador where it is optional, require some first-party coverage that compensates for 'own' (first party) losses irrespective of fault. Some commentators describe regimes with such first party coverage as 'no fault' ones, but normally to be classified as a 'no- fault' regime, there are restrictions on the right to sue the at-fault driver for damages incurred.

All private insurance regimes have restrictions on the amount of money that can be awarded by the courts for pain and suffering, as indicated in table A1a. Those provinces that have maximum awards for pain and suffering for minor injuries, namely Alberta, New Brunswick, Nova Scotia, Prince Edward Island and Newfoundland and Labrador, are not usually considered as no-fault jurisdictions. Ontario, which limits the right to sue for pain and suffering to injuries that are deemed to be 'severe', is considered to be a 'partial' no-fault regime.

Of the four public insurance provinces, three have no-fault regimes. Manitoba and Quebec do not allow any suits for pain and suffering, and Saskatchewan imposes a \$5,000 deductible on awards for pain and suffering (since 2003, Saskatchewan has allowed drivers to opt out of no-fault provisions, but this is rarely done). Manitoba and Saskatchewan would be considered as 'partial' no-fault regimes as the right to sue for economic losses in excess of no- fault benefits is maintained. By contrast, Quebec has a pure no-fault system for all road accidents involving bodily injuries. This means that Quebecers cannot resort to the tort system to sue for additional damage recovery.

The point of this brief overview is to highlight the main similarities and differences across provincial jurisdictions with the view to identifying where problems may arise when comparing provincial automobile insurance plans, especially with respect to prices and financial

outcomes. One expects big differences to exist across public and private regimes, and liability and no-fault ones. I will expand upon some of the intricacies of these differences as needed below. I now turn to a discussion of the price of automobile insurance in each jurisdiction. In order to compare across provincial jurisdictions, quotes were obtained for several different driver profiles. The following section presents this information.

2. THE PRICE OF AUTO INSURANCE ACROSS PROVINCES

Insurance prices depend upon a variety of factors which may differ across provincial jurisdictions. Table A2 in the Appendix lists these factors, including: type of vehicle; place of residence; driving record; use of vehicle; sex; age; and marital status. These latter three ‘personal’ criteria are regularly criticized as being ‘discriminatory’. Whereas statistically, young, single, males have more accidents, the argument is often raised that individuals should not be judged *ex ante* based on statistical averages. The public provinces do not price based on age or sex.

As indicated in table A2, many factors are taken into account when pricing insurance. For the purposes of this report, estimates were obtained for the price of insurance for a man and for a woman with the following characteristics: 45 years old, single, employed, driving to work 15 kilometers, annual driving of 15,000 kilometers, 2008 Honda Civic (4 door, DX model), living in a city (the most populous city in the province, as specified in the table). This price was obtained

for someone with a ‘clean’ driving record (no at fault accidents in past 10 years, see the footnote that follows this sentence) and a ‘poor’ record defined as one partially at-fault accident and one speeding ticket over the past three years.² For the private insurance regimes, the Kanetix web site provides a host of prices for the identified driver from several companies (but the company with the ‘lowest’ price in Ontario is not identified, one has to contact Kanetix directly for this information).³ In addition, price quotes were obtained from several other large insurance companies either by telephone or on line. All prices were obtained in May-June 2017.

All price quotes were obtained for the ‘mandated’ coverage (as required by law, and defined in tables A1a and A1b) and for a ‘complete’ package with higher-than-mandated liability limits, comprehensive

coverage, as well as other benefits (defined in Appendix table A3). One important caveat is that in the private regimes, insurance companies typically do not offer packages with just the minimum prescribed third party insurance amounts, as these are inadequate to cover damages in the event of an accident. Normally, insurance companies require that one takes out at least one million dollars in such coverage (whereas the mandated amount is \$200,000 in most jurisdictions). In the public regime, the minimum mandated amount is provided. Table A3 also provides the minimum amounts of liability coverage available by jurisdiction.

For the public regimes, the prices were obtained in Manitoba from the Autopac web site; in Saskatchewan, basic coverage was obtained from the SGI web site and the complete package was obtained by telephone from the broker companies located around the postal code of the representative driver, recommended on the SGI website⁴. All of the information for British Columbia was also obtained by calling the brokers recommended on the ICBC website around the postal code of the driver.

All of the data gathered on prices are provided in the Appendix, tables A4a-d. Tables A4a-d present all of the price quotes received by jurisdiction and important notes to take into account. Table A4a contains prices for the private provinces for our representative driver with a good driving record; table A4b contains the same for a poor driving record (except for Newfoundland and Labrador which did not provide quotes for poor drivers). Tables A4c and d present the same information but this time for the public provinces. Before turning to a discussion of pricing tendencies from tables A4a-d, it is interesting to note that for the 45-year-old driver featured here, the insurance price for women is often higher than that for men. It is for young drivers that the opposite occurs: young men are typically charged higher prices than young women in private regimes. For instance, a 21 years old female student living at home but principal driver of the aforementioned 2008 Honda Civic, is charged at least \$3,459 for the mandated coverage, whereas an otherwise similar male would be charged \$3,997.⁵

In order to focus the discussion, the key data from tables A4a-d are synthesized and presented in table 1. Table 1 reports three prices (with a fourth for Ontario) each for males and for females, for mandated coverage and for complete (optional) coverage, and for a clean driving record and for a poor driving record (as previously defined). The three prices are as follows: the first number is the minimum price quoted by an identified insurance company; the next number below is the

TABLE 1 *Price Quotes for 45 year old, Employed Driver (Honda Civic)*
Source: Appendix Tables A4a-d

	CLEAN RECORD				POOR RECORD			
	Required Coverage		Complete Coverage		Required Coverage		Complete Coverage	
	Female	Male	Female	Male	Female	Male	Female	Male
Ontario (Toronto)	1,671	1,661	1,815	1,930	2,538	2,493	3,149	3,255
Maximum	3,948	3,948	4,724	4,463	6,572	6,572	7,809	7,809
Unspecified Minimum	N/A	1,285	N/A	1,727	N/A	N/A	N/A	N/A
Average	2,464	2,497	2,815	2,848	4,394	4,354	5,295	5,259
Alberta (Calgary)	669	667	1,223	1,223	1,216	1,216	2,481	2,481
Maximum	978	902	1,897	1,954	1,236	1,236	2,862	2,991
Average	796	782	1,466	1,473	1,223	1,223	2,663	2,669
Nova Scotia (Halifax)	653	643	1,032	1,032	856	845	1,464	1,479
Maximum	924	924	1,433	1,190	1,374	1,374	2,153	2,153
Average	764	760	1,170	1,176	1,115	1,110	1,809	1,816
PEI (Charlottetown)	391	391	1,002	1,002	554	554	1,545	1,604
Maximum	629	629	1,213	1,213	887	887	1,967	1,967
Average	517	516	1,074	1,085	721	721	1,756	1,756
NB (Moncton)	587	587	1,049	1,049	933	933	1,432	1,432
Maximum	898	898	1,349	1,349	2,035	2,035	2,776	2,776
Average	775	775	1,180	1,180	1,484	1,481	2,102	2,104
NL (St Johns)	918	918	1,329	1,329				
Maximum	1,751	1,751	2,377	2,377				
Average	1,258	1,258	1,832	1,832				
BC (Vancouver)	1,064	1,064	1,618	1,618	1,514	1,514	1,743	1,743
Maximum	1,123	1,123	2,372	2,372	1,618	1,618	2,640	2,640
Average	1,087	1,087	1,853	1,853	1,571	1,571	2,310	2,310
Manitoba (Winnipeg)	1,167	1,167	1,451	1,451	1,239	1,239	1,541	1,541
Maximum	1,167	1,167	1,451	1,451	1,239	1,239	1,541	1,541
Average	1,167	1,167	1,451	1,451	1,239	1,239	1,541	1,541
Saskatchewan (Saskatoon)	917	917	1,125	1,125	978	978	1,186	1,186
Maximum	917	917	1,142	1,142	978	978	1,196	1,196
Average	917	917	1,131	1,131	978	978	1,192	1,192

maximum price quoted by an identified insurance company; underneath the maximum price in Ontario only is the 'lowest unspecified price' from Kanetix;⁶ lastly, I report the average of all of the quotes obtained. All of this information is given for all provinces except Quebec: the private regimes are presented first followed by the public ones.

a) Private Insurance Regime Prices

Several observations can be made from Table 1 with respect to the private provinces. First, it reveals the importance of driving record—for mandatory coverage, a poor record for a driver in Toronto, Ontario, results in an increase in the lowest rates from \$1,406 to \$2,538 for a woman, and from \$1,661 to \$2,493 for a man. In Calgary, Alberta, the comparable minimum coverage rates go from \$669 to \$1,216 for females and from \$667 to \$1,216 for males. Table 1 also reveals the importance of coverage—moving from the mandated coverage to a more complete coverage results in a significant increase in rates. For the 45-year-old male living in Toronto, his best price goes from \$1,661 (mandatory package) to \$1,930 (complete package). The prices in the Maritime Provinces are different than in Ontario, but display a similar pattern.

Whereas the previous paragraph focused on the lowest price quoted for the private regimes, if one looks at the average of all of the quoted prices (as reported in Tables A4a and b), it renders even clearer that Ontario is by far the most expensive province for drivers, irrespective of sex or driving record. It is actually quite startling the magnitude of the rates quoted for Toronto relative to these other, albeit much smaller, cities.

Finally, with respect to the private regimes, there is a huge difference between the prices quoted for Ontario (Toronto) and for the other provinces especially for the basic, mandated, coverage. These differences are smaller when one compares prices for the complete insurance package, but it is clear that population size (actually, more likely to be population density) plays a role in explaining prices.

b) Public Insurance Regime Prices

Information on prices from the three public jurisdictions (excluding Quebec) is presented in the bottom part of table 1. These prices do not vary by gender but do vary by driving record. All prices reported

for the public provinces exclude registration and licensing fees which were initially reported in the insurance price: \$161 were subtracted in Manitoba, \$68 in Saskatchewan and \$61 in BC.

The price for someone with a clean driving record and mandatory coverage in Winnipeg, Manitoba is \$1,167 and for the extended, 'complete' coverage, it is \$1,451. In Saskatoon, Saskatchewan, basic coverage costs \$917 while the price of complete coverage varies a bit according to brokers used, from \$1,125 to \$1,217. In Vancouver, British Columbia, both basic coverage and the optional (complete) plan vary by broker: from \$1,064 to \$1,123 (basic) and from \$1,618 to \$2,372 (complete).

Only in BC is there some variation in the prices quoted across the coverages. But the variation is quite small when compared to what was observed in the private jurisdictions. As a consequence, average prices are only slightly different than the minimum price indicated for BC in table 1.

Having a poor driving record also leads to an increase in the price of insurance in the public provinces. Basic coverage goes up from \$1,167 to \$1,239 in Manitoba, from \$917 to \$978 in Saskatchewan, and the minimum quote in BC moves from \$1,064 to \$1,514. Even though the population of Greater Vancouver, at 2.46 million, is the same as the population of the other two public provinces combined (Saskatchewan with 1.15million and Manitoba with 1.32million) and far exceeds the population in the other two cities, the amount charged a driver in Vancouver for required coverage is less than that of Winnipeg (\$1,064 versus \$1,167), and not far off of the lowest-priced jurisdiction, Saskatoon (\$917).⁷ Once complete coverage is taken into account, the Vancouver driver pays a bit more (\$1,618 versus \$1,451), but still surprisingly close given the huge population differences in these jurisdictions.

The average prices of the minimum required insurance package across the three public auto insurance provinces are remarkably similar. Saskatchewan charges the lowest price on average, Manitoba charges the highest on average, and BC is in the middle. Once again, the fact that Vancouver is significantly larger and more densely populated than either Saskatoon or Winnipeg would lead one to anticipate significantly higher prices in Vancouver, but this is not clearly revealed by the data. Moreover, the fact that Saskatchewan and Manitoba run no-fault systems with restrictions on the right to sue for pain and suffering might

also lead to the expectation of clearly lower prices in these jurisdictions relative to the liability-based province of British Columbia—but this is not the case either.

c) Comparing BC Prices to other Public and Private Insurance Regimes

With much caution, one can compare across private and public regimes. To facilitate this comparison, table 2 extracts the average prices from table 1 for the **minimum required** insurance package for each province for the 45-year-old employed female or male driver of a Honda Civic, with a clean driving record. These average prices are reported from highest to lowest.

■ **TABLE 2** *Average Price for Minimum Required Coverage: 45 year old, Employed Driver (Honda Civic) Extracted from Table 1*

PROVINCE	FEMALE	MALE
Ontario (Toronto)	2,464	2,497
Newfoundland (St. John's)	1,258	1,258
Manitoba (Winnipeg)	1,167	1,167
British Columbia (Vancouver)	1,087	1,087
Saskatchewan (Saskatoon)	917	917
Alberta (Calgary)	796	782
New Brunswick (Moncton)	775	775
Nova Scotia (Halifax)	764	760
PEI (Charlottetown)	517	516

From table 2 it is clear that the average price in British Columbia (Vancouver) is in the middle of the pack and most closely comparable to the prices in Manitoba and Saskatchewan, the other two public jurisdictions. The two largest cities in this sample are Vancouver and Toronto: the Greater Toronto Area has a population of 6.42 million, while Greater Vancouver has 2.46 million. However, a driver with a good record in Vancouver pays significantly less (in fact less than half for the driver featured in table 2) than an otherwise comparable driver in Toronto. This observation is particularly interesting because Toronto is in a no-fault province that has already severely restricted the right

to sue for pain and suffering for all but severe injuries which was theoretically supposed to keep costs (and hence prices) down, whereas Vancouver is in a liability-based regime.

Once again, it is important to remember that the insurance packages are not entirely comparable across jurisdictions. The focus on mandatory packages, and minimum quotes, helps to determine the cost of entry into driving by province—which is somewhat comparable across jurisdictions. But from tables 1A and B, one can see that there are differences across many of the benefits provided in the mandatory packages, affecting prices.

3. COMPARING COSTS ACROSS PUBLIC AND PRIVATE REGIMES

Before turning to comparisons of insurance costs, it is necessary to understand a couple of fundamental differences between public and private regimes when it comes to collecting and interpreting data. Since 2011, data for the private provinces are available from the General Insurance Statistical Agency (GISA) “... an independent legal entity under the Canada Corporations Act ... to carry out the activities of a statistical agent on behalf of all participating Canadian jurisdictions.”⁸ The Insurance Bureau of Canada collects this data on behalf of GISA. Efforts are made to render these data as accurate as possible, hence facilitating interprovincial comparisons. No comparable information prior to 2011 was available from IBC.

Some information is not included in the available GISA data, most importantly from the point of view of this comparison, is the exemption of Facility Association residual market information. High-risk drivers, who cannot obtain automobile insurance through conventional means, have to apply to a Facility Association, which provides them with coverage typically by facilitating a risk-pooling contract across several companies. Facility Associations exist in all privately provided automobile insurance regimes because automobile insurance is mandatory. Not only is the information from these high risk drivers exempt from GISA data, but so too is information from uninsured drivers.⁹ The Facility Associations have an uninsured motorist fund that indemnifies victims of uninsured drivers. Thus, GISA data does not include all of the very high risk portion of the driving population.

By contrast, data from public insurance provinces are obtained from the public insurer itself. These data include all drivers, even the high risk ones. And each public insurer has a fund to deal with uninsured drivers. In other words, the insurance data presented below include all insured drivers in the public jurisdictions but not in the private jurisdictions where data on the riskiest group is excluded.

In addition to these exclusions, there is potentially a fundamental difference between the number of claims reported in a liability-based private system versus a first-party-based public one. In a liability regime, a driver involved in an accident through no fault of his/her own, will not typically make a claim on his/her own insurance policy. The claim will be on the at-fault driver's policy. As a result, such an accident with two vehicles, say, will result in one claim. In the public, first-party, system, such an accident would yield two claims, one for each vehicle. We cannot, then, compare number of claims across these two systems, which is apparent in the next section.

a) Interprovincial Comparisons: Loss Ratios and Average Claim Costs

Notwithstanding the difficulties associated with comparing insurance regimes across provinces, a simple measure of the costs of insurance provision is looked at: the “Claim and Adjustment Expenses Incurred” divided by the “Earned Premiums”—known as the “Earned Incurred Loss Ratio” (referred to as the “Loss Ratio”). The claim and adjustment expenses refer to the amounts reported by insurance companies directly associated with claims. Earned premiums are the premiums paid for the policies during the fiscal year: if someone began their policy half way through the year but paid for a full year in advance, only one-half of these premiums would count in this number. Similarly, if someone were to cancel their policy during the year, the amount reimbursed would be netted out of this figure.

The focus on the loss ratio allows one to find reasonably comparable information for all jurisdictions (except Quebec). The loss ratio provides a measure of the amount of money paid out for claims relative to the amount of premiums earned: the larger this number, the closer premiums reflect claims. As this ratio approaches one, claim costs approach premiums paid and arguably this implies that there is less ‘waste’ in the system. As a result, the loss ratio has been treated as a

measure of performance. But it is an imperfect one. This ratio can be high for several reasons, including premiums being set ‘too low’; claims being ‘too high’; or a combination of both of these factors.

That being said, the loss ratio is one way to compare jurisdictions. Like before, it makes sense to continue to discuss the private and public systems separately. The top half of table 3 presents the earned premiums and claim expenses for the private systems: the four Atlantic Provinces (together), Ontario and Alberta, for the five-year period: 2011 to 2015. As previously indicated, all of these data are gathered from the same source, the General Insurance Statistical Agency, which helps render them comparable. The second half of the table reports the public regimes.

■ **TABLE 3** *Earned Premiums, Claim and Adjustment Expenses Incurred and Earned Incurred Loss Ratio*

PROVINCE	COVERAGE AND ACCIDENT YEAR	EARNED PREMIUMS	CLAIM AND ADJUSTMENT EXPENSES INCURRED	EARNED INCURRED LOSS RATIO (%)
Alberta	2011	2,476,498,770	1,737,461,860	70
	2012	2,583,782,815	2,023,238,074	78
	2013	2,738,168,536	2,156,806,256	79
	2014	2,931,948,823	2,357,661,553	80
	2015	3,093,938,231	2,491,948,366	81
	Total	13,824,337,175	10,767,116,109	78
Atlantic Provinces	2011	1,163,948,471	777,985,471	67
	2012	1,174,441,574	804,537,082	69
	2013	1,184,283,171	865,660,975	73
	2014	1,199,866,294	901,404,977	75
	2015	1,218,228,911	981,135,267	81
	Total	5,940,768,422	4,330,723,772	73
Ontario	2011	10,037,791,312	6,322,237,101	63
	2012	10,439,481,575	6,274,427,278	60
	2013	10,582,013,779	6,806,718,445	64
	2014	10,538,886,511	7,103,631,213	67
	2015	10,378,560,055	7,600,789,200	73
	Total	51,976,733,233	34,107,803,237	66

→

PROVINCE	COVERAGE AND ACCIDENT YEAR	EARNED PREMIUMS	CLAIM AND ADJUSTMENT EXPENSES INCURRED	EARNED INCURRED LOSS RATIO (%)
British Columbia	2006	3,256,856,000	2,944,453,000	90
	2007	3,482,434,000	2,914,550,000	84
	2008	3,631,215,000	2,819,138,000	78
	2009	3,650,025,000	2,970,125,000	81
	2010	3,667,324,000	3,074,228,000	84
	2011	3,673,210,000	3,186,563,000	87
	2012	3,811,386,000	3,276,291,000	86
	2013	3,927,694,000	3,434,660,000	87
	2014	4,158,695,000	3,894,833,000	94
	2015	4,447,931,000	4,363,495,000	98
	Total	37,706,770,000	32,878,336,000	86
Saskatchewan*	2006	542,204,000	449,072,000	83
	2007	557,087,000	532,217,000	96
	2008	587,918,000	563,965,000	96
	2009	630,559,000	600,432,000	95
	2010	684,821,000	609,673,000	89
	2011	726,282,000	806,924,000	111
	2012	767,226,000	740,528,000	97
	2013	806,965,000	739,103,000	92
	2014	863,976,000	834,155,000	97
	2015	925,678,000	753,031,000	82
	Total	7,092,716,000	6,629,100,000	93
Manitoba**	2006	798,811,000	731,689,000	92
	2007	828,121,000	728,675,000	88
	2008	865,056,000	723,430,000	84
	2009	895,811,000	736,514,000	82
	2010	918,905,000	547,320,000	60
	2011	935,385,000	850,003,000	91
	2012	940,910,000	889,211,000	95
	2013	956,350,000	1,009,260,000	106
	2014	1,001,770,000	992,897,000	99
	2015	1,070,182,000	920,452,000	86
	Total	9,211,301,000	8,129,451,000	88

Sources: See Table A5 in the Appendix.

Notes

* The Saskatchewan Auto Fund transitioned to a March 31 year end in 2015. The current fiscal period represents the 15 months ended March 31, 2016.

** Manitoba's Annual Reports results are based on a Fiscal year ending February 28/29.

Starting first with the private systems, three points are worthy of note from table 3. First, the loss ratio in Alberta is the highest in every year but the last one where it is the same as in the Atlantic Provinces. Second, Ontario always has the lowest loss ratio of this group. Finally, except for in 2012 in Ontario, the loss ratios increase every year in every jurisdiction. If one interprets this ratio as being a measure of good performance, table 3 suggests that Alberta performs better than the other jurisdictions (although it is tied with the Atlantic Provinces in 2015), and Ontario is the worst. Again, caution is required here, for the reasons stated earlier. The fact that these ratios are rising can be interpreted as meaning that the industry is performing better. But ... it may also be an indicator of impending financial difficulty to the extent that claims being paid out are approaching premiums earned.

On the topic of financial difficulty, a main source of revenue in the insurance market is returns to investments. The nature of the insurance market is such that firms collect a massive amount of money regularly, but have much more irregular payouts. Investment income is an important revenue component. Table 4 presents the average returns on equity and investment, as well as loss ratios across the country (private property and casualty insurance, of which automobile insurance is the largest component) according to the Insurance Bureau of Canada (Fact Book, 2017, p.14).¹⁰ The main point to notice from this table is the falling rate of return on investments over the 2011 to 2015 period. This falling rate adversely affects the size of the revenues generated for insurance companies. As these revenues fall, shortfalls have to be made up elsewhere—principally through premium hikes or claim reductions. All insurance regimes are in the same boat when it comes to the problem of investment income. Although, arguably, public regimes have recourse to other sources of revenue (discussed briefly below).

Returning to table 3, the bottom half presents the Earned Incurred Loss Ratio for the three public provinces included in this report. Before analyzing these data, a few remarks are necessary. In 2015, the Saskatchewan Auto Fund moved to a March 31st year end and hence the data for 2015 actually comprise 15 months; the financial year is ended February 28th (29th) in Manitoba; and in 2015 the Insurance Corporation of British Columbia announced that it was no longer considering the Loss Ratio as a performance measure effective with the 2015-2017 *Service Plan* (this was calculated by the author and provided in table 3).¹¹

TABLE 4 *Canada Wide Returns on Investment and Equity for the Property –Causality Insurance*

	RETURN EQUITY*	RETURN INVESTMENT	EARNED LOSS RATIO	OPERATING EXPENSE RATIO	COMBINED RATIO
1993	9.5%	10.7%	77.1%	32.8%	109.9%
1994	6.8%	8.0%	75.7%	31.3%	107.0%
1995	11.7%	9.1%	73.3%	30.8%	104.1%
1996	13.6%	10.3%	72.7%	30.7%	103.4%
1997	13.1%	10.4%	71.4%	31.2%	102.6%
1998	6.8%	8.5%	74.9%	32.9%	107.8%
1999	6.5%	7.3%	72.6%	33.2%	105.9%
2000	6.3%	9.0%	75.9%	32.7%	108.7%
2001	2.6%	7.5%	80.0%	31.0%	111.0%
2002	1.7%	5.4%	76.9%	28.9%	105.8%
2003	11.6%	6.2%	69.9%	28.6%	98.4%
2004	18.1%	5.6%	62.7%	28.2%	91.0%
2005	17.2%	5.9%	64.7%	28.7%	93.4%
2006	16.9%	5.9%	59.5%	28.1%	87.5%
2007	14.1%	5.5%	62.5%	28.5%	91.0%
2008	6.0%	3.9%	70.3%	30.0%	100.3%
2009	6.9%	4.2%	69.5%	30.0%	99.6%
2010	7.6%	4.3%	69.1%	30.2%	99.4%
2011	8.0%	4.2%	68.2%	30.3%	98.4%
2012	10.8%	3.9%	64.7%	30.6%	95.3%
2013	6.9%	3.1%	68.1%	30.8%	98.9%
2014	9.9%	3.9%	66.6%	31.0%	97.6%
2015	10.0%	3.3%	63.5%	31.4%	94.9%
2016	6.0%	**2.7%	67.6%	31.8%	99.4%

* Excluding Lloyd's

** As per the latest OSFI regulatory filing forms, which came into effect Q4 2016

Source: Copied directly from: IBC (2017) Facts Book, p. 14, accessed at: http://assets.abc.ca/Documents/Facts%20Book/Facts_Book/2017/Fact-Book-2017.pdf

Looking across the three public jurisdictions, one finds quite a bit of variation in the loss ratio over time. For the first five years of the data (2006-2010), this ratio basically falls in BC, rises then falls in Saskatchewan, but not to as low a level as it began in 2006, and falls in Manitoba (although the rate of 60 in 2010 seems anomalously low). For the second part of the data series, namely from 2011 to 2015, the period for which private insurance regime data are also available, different patterns are displayed. It basically rises in BC, falls (but not continuously) in Saskatchewan, where it began from an anomalously high level of 111, and rises then falls in Manitoba. Over this latter five-year period, the loss ratio in BC is the lowest when compared to Saskatchewan and Manitoba, except in 2015 when it is the highest. It is also notable that twice the loss ratio is greater than one—meaning that claims exceeded earned premiums in that period. Overall, therefore, when comparing the loss ratios of the three public auto insurance provinces of BC, Saskatchewan and Manitoba, it is clear that they fluctuate significantly from year to year and that no one single province has performed consistently or significantly better than the others. BC has remained in the pack.

Altogether there is a remarkable amount of year-to-year variation in this loss ratio in both the private and public jurisdictions. This observation suggests that much caution needs to be taken when relying on this figure in any given year. It is likely to be meaningful to make a statement about a continuously rising or continuously falling loss ratio—such a pattern would be suggestive, but when it regularly goes up and down, as is observed in table 3, it is difficult to rely on it as an indicator of performance one way or another. Table 3 provides the total loss ratio over the period of the data series—one can see quite clearly that this total loss ratio bears very little resemblance to, say, the loss ratio of 2015. In BC, for instance, it happens to have the highest loss ratio in 2015 at 98 across all of the jurisdictions, but, at 86, it has the lowest total loss ratio across the three public provinces for the ten years of the data set, followed closely by Manitoba with 88. Ontario, with 66, has the lowest total loss ratio of all reported jurisdictions.

Comparing across the private and public jurisdictions reveals that the loss ratio is almost always highest in the public regimes (except for 2010 in Manitoba). One interpretation of this observation is that the public regimes are outperforming the private ones insofar as their claims are closer to earned premiums—but this is too facile an interpretation for the reasons already stated. Moreover, because public regimes may have more ready access to other sources of revenue typically not available to private companies, including fees for a variety

of other, related, services, like drivers' permits and vehicle registrations, not to mention the possibility of transfers from general government revenues, this means that they can operate with a higher loss ratio relative to the private regimes. Another reason why public regimes may have a higher loss ratio is that their data include all of the high-risk drivers—those who would have to resort to a Facility Association in the private regimes, plus those who drive uninsured.

One might be tempted to compare the average cost of claims by province. However, as discussed above, public and private regimes are inherently different in the way in which claims are counted and hence comparisons across these regimes are inappropriate. Within regime comparisons can be made. To this end, information on claim and adjustment expenses previously reported in table 3 can be used, but now these amounts need to be expressed as 'real' dollars to take account of annual inflation. If one does not account for inflation, then rising claim costs may simply be reflecting general price increases rather than other factors. Inflation is taken into account by using the provincial consumer price indices each year.¹² The year 2011 was chosen as the base (or reference) year, which means that all of the claim and adjustment expenses are expressed in 2011 dollars. Therefore, in table 3 the reported figures for 2011 are identical to those in table 5; for years prior to 2011, real claim expenses reported in table 5 are higher than those in table 3, and for years after 2011 they will look lower in table 5 compared to table 3 as the numbers are expressed in 2011 dollars. Once the 'real claim costs' (claim costs and adjustment expenses from table 3 divided through by the CPI) are obtained, this number can be divided by the number of claims each year to obtain the real average cost per claim. Table 5 provides the information on real claim costs in the column entitled "Real Claim and Adjustment Expenses Incurred"; and provides the information on the "Real Average Cost per Claim" in the last column. Remember, that the information in this last column cannot be compared across public and private regimes because of the way in which claims are calculated. Looking first at the three private regions (Alberta, Ontario and Atlantic Provinces), the (real) average cost of claims in Ontario is much higher than in the other two jurisdictions; the Atlantic Provinces are clearly the lowest on this measure. Reliable information for Saskatchewan could not be obtained; hence only two public regimes are reported in table 3. BC has higher average claim costs when compared to Manitoba.

TABLE 5 *Number of Earned Vehicles, Number of Claims, Real Claim and Adjustment Expenses Incurred and Real Average Cost per Claim*

PROVINCE	COVERAGE AND ACCIDENT YEAR	NUMBER OF EARNED VEHICLES*	NUMBER OF CLAIMS	REAL CLAIM AND ADJUSTMENT EXPENSES INCURRED	REAL AVERAGE COST PER CLAIM
Alberta	2011	2,307,347	246,758	1,737,461,860	7,041
	2012	2,396,990	271,795	2,000,952,210	7,362
	2013	2,490,256	271,306	2,103,262,579	7,752
	2014	2,586,150	280,845	2,241,740,221	7,982
	2015	2,656,122	272,353	2,342,841,508	8,602
	Total	12,436,866	1,343,057	10,426,258,378	7,748
Atlantic	2011	1,374,134	160,54	777,985,471	4,846
	2012	1,401,563	153,552	789,305,161	5,140
	2013	1,423,561	157,95	837,298,374	5,301
	2014	1,440,100	162,946	857,399,657	5,262
	2015	1,459,626	172,949	931,600,368	5,387
	Total	7,098,984	807,936	4,193,589,030	5,187
Ontario	2011	6,651,053	610,535	6,322,237,101	10,355
	2012	6,766,018	592,948	6,186,853,170	10,434
	2013	6,855,617	620,882	6,646,234,839	10,705
	2014	6,953,621	634,489	6,776,378,941	10,680
	2015	7,080,296	657,761	7,165,265,172	10,893
	Total	34,306,604	3,116,615	33,096,969,223	10,613
British Columbia	2006	3,012,000	947,000	3,173,254,158	3,351
	2007	3,108,000	992,000	3,086,773,409	3,112
	2008	3,193,000	964,000	2,924,573,259	3,034
	2009	3,225,000	946,000	3,081,207,146	3,257
	2010	3,281,000	895,000	3,147,166,626	3,516
	2011	3,321,000	900,000	3,186,563,000	3,541
	2012	3,372,000	915,000	3,240,134,987	3,541
	2013	3,429,000	917,000	3,399,642,226	3,707
	2014	3,493,000	900,000	3,816,215,681	4,240
	2015	3,596,000	858,000	4,229,177,766	4,929
	Total	33,030,000	9,234,000	33,284,708,259	3,623

→

PROVINCE	COVERAGE AND ACCIDENT YEAR	NUMBER OF EARNED VEHICLES*	NUMBER OF CLAIMS	REAL CLAIM AND ADJUSTMENT EXPENSES INCURRED	REAL AVERAGE COST PER CLAIM
Manitoba**	2006		269,135	796,982,315	2,543
	2007		280,319	777,954,193	2,355
	2008		254,856	755,327,266	2,481
	2009		267,611	764,270,443	2,381
	2010		275,763	563,501,635	1,562
	2011		277,201	850,003,000	2,532
	2012		287,105	875,166,936	2,559
	2013		287,741	971,515,317	2,881
	2014		273,244	938,220,310	2,922
	2015		297,957	859,475,685	2,667
	Total		2,770,932	8,152,417,099	2,488

Sources

See Appendix, Table A5 and Statistics Canada, CANSIM Table 326-0021.

Notes

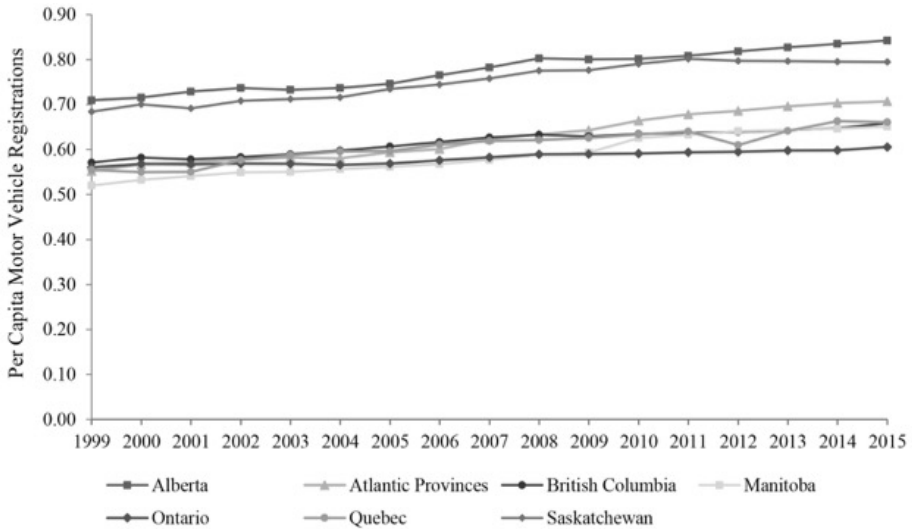
* Earned Vehicles refers essentially to the number of vehicles insured during the year, taking into account policies that start and end throughout the year. For instance, if an insurance policy began on July 1st, then it would be counted as a 0.5 of an earned vehicle during the calendar year.

** Manitoba has a fiscal year ending February 28 (29).

4. OTHER FACTORS INFLUENCING THE PRICE OF AUTOMOBILE INSURANCE

Several factors influence the demand for automobile insurance, not the least of which is the number of vehicles on the road. Graph 1 presents the number of motor vehicle registrations per capita per province over the period 1999 to 2015. A couple of broad points to note: the highest rate of per capita vehicle registrations is in Alberta, followed, occasionally very closely, by Saskatchewan. These two provinces are clearly higher than the others. The other regions are more clumped together, especially until about 2008 when we see Ontario having from then on the lowest per capita number of vehicles, and from 2009 the Atlantic Provinces trend upwards moving away from the pack. British Columbia has had a slight upward trend each year with a per capita rate of 0.57 in 1999 reaching a high of 0.66 in 2015 in par with the rate in Quebec and Manitoba.

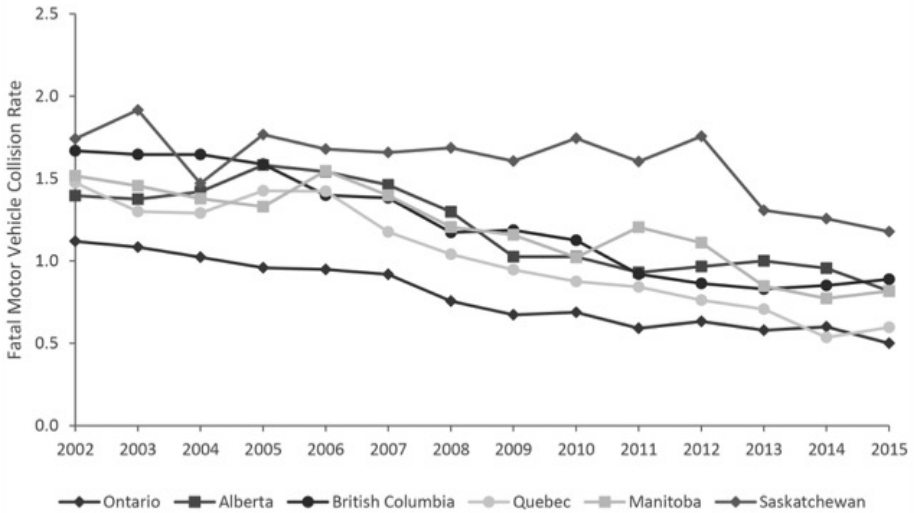
GRAPH 1 *Per Capital Motor Vehicle Registrations 1999-2015*



Sources: 1999 to 2015: Statistics Canada, CANSIM Table 405-0004 (Motor Vehicle Registrations); 1999 to 2015: Statistics Canada, CANSIM Table 051-0001 (population).

Another factor that influences the price of insurance is the number of accidents on the road. Typically, accidents are grouped into three main types: property-damage only, bodily-injuries, and fatal. The most comparable data on accidents are those gathered by police reports. One issue with these data, however, is the practice around when police are called to the scene. Small property-damage only accidents often are not attended by police, so these are the least comparable across jurisdictions. Problems exist with bodily-injury accidents as well insofar as police presence may not be required if the injuries are minor. The only type of accident that is accurately reported is fatal accidents—these tend to provide a good indicator of driving risk over time. Graph 2 presents the rate of fatal accidents per 10,000 registered motor vehicles from 2002 to 2015 (excluding the Atlantic Provinces). Generally speaking, there is a downward trend in this rate: all of the rates are significantly lower in 2015 when compared to 2002. In 2002, the two jurisdictions with the highest fatality rates were Saskatchewan and British Columbia, with a rate of 1.7 fatal collisions per 10,000 registered vehicles (as opposed to, say, Ontario at 1.1). By 2015, the BC rate is clearly lower than that of Saskatchewan—0.9 versus 1.2—and Saskatchewan continues to have the highest rate. Ontario has the lowest fatal collision rate across the board except for 2014 when Quebec held that distinction.

GRAPH 2 *Fatal Vehicle Collisions per 10,000 Registered Vehicles*



Sources

See table A5.

Notes

1. Ontario Statistics for 2015 and 2016 are preliminary statistics as of June 2017.
2. "Fatal Motor Vehicle collisions" include all reported motor vehicle crashes that resulted in at least one death, where death occurred within 30 days of the collision, except in Quebec before 2007 (eight days).

5. A FEW WORDS ON PUBLIC VERSUS PRIVATE PROVISION OF INSURANCE

The question as to whether automobile insurance is *best* provided by a public monopoly as opposed to by private insurers is one that has received little attention of late, but has been addressed in waves over the past decades. Currently, the public versus private debate rages on in the health care area, especially in the United States with its range of public, private and non-profit provision of medical services.

When it comes to the public versus private ‘debate’, much hinges on the impact of competition on prices and quality in comparison to potential cost savings associated with monopoly provision. In short—the big question centres on whether or not the provision of (automobile) insurance is subject to large enough economies of scale to warrant a public monopoly. Very little empirical work has been done on this question for automobile insurance. Kennedy (1976) wrote a PhD thesis

on this private versus public issue, and used as a case study the experience in Manitoba, with the introduction of its Autopac public insurance program in November, 1971, a couple of years before the ICBC creation in March, 1974.¹³ He compares this public provider with the private system in Alberta and concludes that neither had a clearly superior product (p.117) and that coordinating the licensing of drivers and vehicles with the provision of insurance led to fewer uninsured drivers on the road in Manitoba relative to Alberta, but that more product variety was available in the private system. He found that the price of basic coverage was cheaper in Alberta but for complete coverage, Manitoba was superior, although Autopac was allowed to run a deficit, which complicated this comparison.

6. CONCLUDING REMARKS

This article has used care and caution in presenting and analyzing data on automobile insurance regimes. By now, it should be clear that very few definite conclusions can be drawn. So what can be said? A particularly informative table is table 1 which provides a synthesis of the price quotes obtained by jurisdiction. From this table, two main conclusions can be drawn: *prices charged in BC are in line with those of Manitoba (with some nuancing: for instance, BC tends to penalize poor driving records much more than either of the other public provinces)*. This holds true even though the demand for insurance in BC far exceeds that of the other two public provinces. *A driver in Vancouver pays significantly less than an otherwise comparable driver in Toronto*. The population in Toronto is larger which may justify some of this difference, but still the difference in some cases is quite remarkable.

One measure of performance is the earned incurred loss ratio which is reported in table 3; this paper has discussed why this ratio is not comparable across public and private regimes. *In the private system, Ontario has the lowest loss ratios; in the public system, there is no discernable, stable, relationship across the three jurisdictions. BC is in the pack.*

Average claim costs cannot be compared across regimes. In fact, one definite conclusion that can be made from this work is the extent to which *differences in the way in which data are gathered in public versus private jurisdictions render comparisons across these two types of jurisdictions quite meaningless.*

Road riskiness as measured by fatal accidents per 10,000 vehicles is falling over time. This is good news. Information on other types of accidents are not comparable either across jurisdictions or, indeed, across time within the same jurisdiction because of reporting rules.

NOTES

1 This article was originally written for the Trial Lawyers Association (TLA) of BC to provide an inter-provincial comparison of automobile insurance regimes in Canada. This project was undertaken on the strict understanding that data would be analyzed and conclusions would be reached from a neutral viewpoint, without any prior expectation one way or another. The TLA was agreeable to these terms.

2 From the Kanetix web site (see next footnote), these records are defined specifically as follows:

Clean Record

- At fault accidents in last 10 years: **None**
- Not at fault accidents in last 10 years: **None**
- Non-accident claims in last 6 years: **None**
- Tickets in last 3 years (not including parking tickets): **None**

Poor Record

- At fault accidents in last 10 years: **One**
 - **Partially at fault accident**
- Not at fault accidents in last 10 years: **None**
- Non-accident claims in last 6 years: **None**
- Tickets in last 3 years (not including parking tickets): **One**
 - **Speeding**

3 The auto insurance price quotes were obtained from: <https://www.kanetix.ca/auto-insurance>. This web site harvests quotes from a long list of companies, found here: https://www.kanetix.ca/about_suppliers_gen.

4 Quebec is omitted partly because the insurance price includes driver license and registration fees and it was too difficult to render this price comparable to the others.

5 These were the minimum prices quoted from specified insurance companies from the Kanetix web site previously mentioned.

6 For Ontario, Kanetix provided an unidentified lowest price, but not for the other provinces.

7 All population data in this section are from the 2016 census, retrieved from CANSIM table number: 051-0001.

8 <https://www.gisa.ca/>

9 <https://www.gisa.ca/Documents/View/2168> (p.6).

10 http://assets.ibc.ca/Documents/Facts%20Book/Facts_Book/2017/Fact-Book-2017.pdf, accessed May 16, 2017.

11 From ICBC Annual Report 2014, p. 10, retrieved at: <http://www.icbc.com/about-icbc/company-info/Documents/ar14.pdf>.

12 Notice this it was not necessary to deflate these numbers for table 2 as both the numerator and denominator were monetary amounts. CPI All Items, 2011=100 (2011 is the base year) was employed.

13 K. F. Kennedy "A Case Study in Private Vs. Public Enterprise: The Manitoba Experience with Automobile Insurance", PhD thesis, 1976, University of Illinois at Urbana-Champaign, Business Administration.

APPENDIX TABLES

■ TABLE A1a Mandated Policy for Private Provinces

BENEFITS	ALBERTA	ONTARIO	NEW BRUNSWICK	NOVA SCOTIA	NEWFOUNDLAND AND LABRADOR	PRINCE EDWARD ISLAND
Mandatory Minimum Third-party Liability	\$200,000 available for any one accident. For claims involving both bodily injury and property damage, claim for property damage capped at \$10,000.	\$200,000 available for any one accident. For claims involving both bodily injury and property damage, claim for property damage capped at \$10,000.	\$200,000 available for any one accident. For claims involving both bodily injury and property damage, claim for property damage capped at \$20,000.	\$500,000 available for any one accident.	\$200,000 available for any one accident. For claims involving both bodily injury and property damage, claim for property damage capped at \$20,000.	\$200,000 available for any one accident. For claims involving both bodily injury and property damage, claim for property damage capped at \$10,000.
Medical, Rehabilitation and Attendant care	Up to \$50,000/person.	Up to \$3,500 for minor injury. Up to \$65 000/ person for non-minor and non- catastrophic injuries. Up to \$1 million for catastrophic injury.	Up to \$50,000/person; four-year time limit.	Up to \$50,000/person; four-year time limit (Consumers have option to purchase additional coverage).	(Optional to buy) Up to \$25,000/person; four-year time limit.	Up to \$50,000/person; four-year time limit.
Funeral Expenses	Up to \$5,000.	Up to \$6 000. (Amount may be higher if optional indexation coverage is purchased).	Up to \$2,500.	Up to \$2,500.	(Optional to buy) Up to \$1,000.	Up to \$2,500.
Disability Income Benefits:						
<i>Income Replacement</i>	80% of gross weekly wages to maximum \$400/week; 104 weeks for total disability.*	70% of gross wages to maximum \$400/week for 104 weeks (longer if victim is unable to pursue any suitable occupation).*	Maximum \$250/week; 104 weeks for partial disability, lifetime for total disability. Must be disabled for at least seven days to qualify.	Maximum \$250/week; 104 weeks for partial disability, lifetime for total disability; must be disabled for at least seven days to qualify.	(Optional to buy) Up to \$140/week; 104 weeks for partial disability; lifetime for total disability; must be disabled for at least seven days to qualify.	Maximum \$250/week; 104 weeks for partial disability, lifetime for total disability; must be disabled for at least seven days to qualify.

BENEFITS	ALBERTA	ONTARIO	NEW BRUNSWICK	NOVA SCOTIA	NEWFOUNDLAND AND LABRADOR	PRINCE EDWARD ISLAND
<i>Non-earners</i>	\$135/week, up to 26 weeks.	\$185/week for 104 weeks; 4-week wait; limit two years. (See Note 1).	N/A	N/A	N/A	N/A
<i>Homemaker</i>	N/A	\$100/week up to 104 weeks.	\$100/week up to 52 weeks.	\$100/week up to 52 weeks.	\$70/week, up to 12 weeks.	\$100/week up to 52 weeks.
Death Benefits						
<i>Surviving Spouse</i>	Death of head of household: \$10,000, plus 20% (\$2,000) for each dependent survivor after first, plus additional \$15,000 for first survivor and \$4,000 for each remaining survivor; Death of spouse/adult interdependent partner of head of household \$10,000.	Death within 180 days of accident (or three years if continuously disabled prior to death); \$25,000 minimum. (Amount may be higher if optional indexation coverage is purchased).	Death within 180 days (or two years if continuously disabled prior to death) of: Head of household, \$50,000 plus \$1,000 to each dependent after first; Spouse/partner, \$25,000.	Death within 180 days (or two years if continuously disabled prior to death) of: Head of household \$25,000 plus \$1,000 to each dependent after first. Spouse/partner \$25,000.	(Optional to buy) Death within 180 days (or two years if continuously disabled prior to death) of: Head of household, \$10,000, plus \$1,000 to each dependent survivor after first; Spouse, \$10,000.	Death within 180 days (or two years if continuously disabled prior to death) of: Head of household \$50,000 plus \$1,000 to each dependent after first; Spouse/partner \$25,000.
<i>Surviving Dependent</i>	Death of head of household: \$10,000, plus 20% (\$2,000) for each dependent survivor after first, plus additional \$15,000 for first survivor and \$4,000 for each remaining survivor; Death of spouse/adult interdependent partner of head of household \$10,000.	Death within 180 days of accident (or three years if continuously disabled prior to death); \$10,000 each. (Amount may be higher if optional indexation coverage is purchased).	Death within 180 days (or two years if continuously disabled prior to death) of: Head of household, \$50,000 plus \$1,000 to each dependent after first; Spouse/partner, \$25,000.	Death within 180 days (or two years if continuously disabled prior to death) of: Head of household \$25,000 plus \$1,000 to each dependent after first. Spouse/partner \$25,000.	(Optional to buy) Death within 180 days (or two years if continuously disabled prior to death) of: Head of household, \$10,000, plus \$1,000 to each dependent survivor after first; Spouse, \$10,000.	Death within 180 days (or two years if continuously disabled prior to death) of: Head of household \$50,000 plus \$1,000 to each dependent after first; Spouse/partner \$25,000.

BENEFITS	ALBERTA	ONTARIO	NEW BRUNSWICK	NOVA SCOTIA	NEWFOUNDLAND AND LABRADOR	PRINCE EDWARD ISLAND
<i>No Dependent</i>	N/A	\$10,000 per survivor. (Amount may be higher if optional indexation coverage is purchased).	N/A	N/A	N/A	N/A
<i>Parent/Guardian</i>	Death of dependent relative: according to age, maximum \$3,000.	\$10,000 per survivor.	Death within 180 days (or two years if continuously disabled prior to death) of dependant, \$5,000.	Death within 180 days (or two years if continuously disabled prior to death) of dependant \$5,000.	(Optional to buy) Death within 180 days (or two years if continuously disabled prior to death) of dependant \$2,000.	Death within 180 days (or two years if continuously disabled prior to death) of dependant \$5,000.
Right to sue for pain and suffering?	Yes. If injury is deemed "minor" under provincial legislation, maximum award is \$5,020.	Yes, if injury meets severity test (called "threshold"), and subject to deductible. (See Note 2).	Yes. If injury is deemed "minor" under provincial legislation, maximum award is \$7,818.87.	Yes. If injury is deemed "minor" under provincial legislation, maximum award is \$8,486.	Yes. Awards are subject to deductible of \$2,500.	Yes. If injury is deemed "minor" under provincial regulation, maximum award is \$7,545.
Right to sue for economic loss in excess of no-fault benefits?	Yes	Yes. (See Note 3).	Yes	Yes.	Yes.	Yes.

Sources

- Automobile Accident Insurance Benefits Regulations, accessed at: www.qp.alberta.ca/1266.cfm?page=1972_352.cfm&leg_type=Regs&isbncIn=0779751140;
- Alberta Standard Automobile Policy, S.P.F. No. 1, accessed at: <http://www.finance.alberta.ca/publications/insurance/automobile-insurance/policies-forms-certificates/SPF1-Standard-Automobile-Policy-2013.pdf>;
- Alberta Superintendent of Insurance Bulletin 07-2016, accessed at: <http://www.finance.alberta.ca/publications/insurance/bulletins-notices/2016/Superintendent-of-Insurance-2016-07-Bulletin.pdf>;
- Alberta Superintendent of Insurance Bulletin 05-2015, accessed at: <http://www.finance.alberta.ca/publications/insurance/bulletins-notices/2015/Superintendent-of-Insurance-2015-05-Bulletin.pdf>;
- Alberta Superintendent of Insurance Bulletin 11-2014, accessed at: <http://www.finance.alberta.ca/publications/insurance/bulletins-notices/2014/Superintendent-of-Insurance-2014-11-Bulletin.pdf>;
- New Brunswick Standard Owner's Policy N.B.P.F. No.1, accessed at: http://0101.nccdn.net/1_5/1c2/1a0/1a9/StandardOwnersPolicy.pdf (Effective October 1, 2010); Injury Regulation, NB Reg 2003-20, accessed at: www.canlii.org/en/nb/laws/regu/nb-reg-2003-20/106597/nb-reg-2003-20.html;
- Financial and Consumer Services Commission. Notice Re: Annual Indexation PDF, accessed at: http://0104.nccdn.net/1_5/156/05b/0a6/January-2017-Annual-Indexation-Notice.pdf;
- Financial and Consumer Services Commission: Automobile Insurance, accessed at: <http://fcnb.ca/automobile-insurance.html>;

- Automobile Insurance Act, Chapter A-22, an Act Respecting Automobile Insurance, accessed at: <http://assembly.nl.ca/Legislation/sr/statutes/a22.htm>; Newfoundland & Labrador Standard Automobile Policy S.P.F. No.1 (not available online);
- Newfoundland & Labrador Standard Automobile Policy S.P.F. No.1 (not available online)
- Nova Scotia Standard Automobile Policy NSPF No.1, 2013, accessed at: www.novascotia.ca/finance/site-finance/media/finance/SPF1-64103-01_2013.pdf; Automobile Insurance Contract Mandatory Conditions Regulations, accessed at: www.novascotia.ca/just/regulations/regs/imandcon.htm;
- Office of the Superintendent of Insurance Bulletin: Minor Injury Cap, accessed at: http://www.novascotia.ca/finance/site-finance/media/finance/Cap_Bulletin-Jan_2017.pdf; Ontario Automobile Policy, accessed at: www.fsco.gov.on.ca/en/auto/forms/Documents/OAP-1-Application-and-Endorsement-Forms/1215E.1.pdf;
- Statutory Accident Benefits Schedule (SABS), Insurance Act, O. Reg. 34/10, accessed at: www.e-laws.gov.on.ca/html/regs/english/elaws_regs_100034_e.htm; Financial Services Commission of Ontario: Auto Bulletins, accessed at: www.fsco.gov.on.ca/en/auto/autobulletins/Pages/default.asp;
- Insurance Act, RSPEI 1988, c I-4, accessed at: www.gov.pe.ca/law/statutes/pdf/i-04.pdf;
- Prince Edward Island Standard Automobile Policy S.P.F. No.1, for accidents occurring on or after October 1, 2014, accessed at: www.gov.pe.ca/photos/original/ELJ_SampleAuto.pdf;
- Prince Edward Island Standard Automobile Policy S.P.F. No.1, for accidents occurring on or after October 1, 2015, accessed at: www.gov.pe.ca/photos/original/JPS_SampleAuto.pdf;
- Bill 46, An Act to Amend the Insurance Act (No. 2) (Chapter 36), accessed at: http://www.assembly.pe.ca/bills/pdf_chapter/64/4/chapter-36.pdf
- Office of Superintendent of Insurance Bulletin: Automobile Insurance Minor Injury Cap - Indexation, accessed at: <http://www.gov.pe.ca/photos/original/MinInjCap2017.pdf>; October 1, 2015, Automobile Insurance Reforms, accessed at: www.gov.pe.ca/photos/original/JPS_InsReform.p
- Prince Edward Island Superintendent of Insurance—Notices, accessed at: www.gov.pe.ca/jps/index.php3?number=1053687&lang=E.

Notes

* Nothing for first seven days of disability.

** Nothing for first seven days of disability unless catastrophically injured.

1. For Ontario the "Non-Earners Benefit" is not available if the insured is eligible for, and elects to receive, the income replacement or caregiver benefit; Income replacement award above no-fault benefit is based on net income after deductions for income tax, Canada Pension and Employment Insurance.
2. Lawsuit allowed only if injured person dies or sustains permanent and serious disfigurement and/or impairment of important physical, mental or psychological function. The court assesses damages and deducts \$36,905 (\$18,453 for a Family Law Act claim).
3. Injured person may sue for 70% of net income loss before trial, 100% of gross after trial; also for medical, rehabilitation and related costs when injury meets severity test for pain and suffering claims.

■ **TABLE A1b** *Mandated Policy for Public Provinces*

BENEFITS	BRITISH COLUMBIA	SASKATCHEWAN	MANITOBA	QUEBEC	
Mandatory Minimum Third-party Liability	\$200,000 available for any one accident. For claims involving both bodily injury and property damage, property damage will be capped at \$20,000.	\$200,000 available for any one accident. For claims involving both bodily injury and property damage, property damage will be capped at \$10,000.	\$200,000 available for any one accident. For claims involving both bodily injury and property damage, property damage will be capped at \$20,000.	\$50,000 available for any one accident; liability limits relate to property damage claims within Quebec and to personal injury and property damage claims outside Quebec.	
Medical, Rehabilitation and Attendant care	Up to \$150,000/person.	If no-fault option selected: Up to \$6,813,680/person.	If tort option selected: Up to \$26,667/person for non-catastrophic injury; Up to \$200,000/person for catastrophic injury.	No time or amount limit.	
Funeral Expenses	Up to \$2,500	Up to \$10,219.	Up to \$6,667.	Up to \$8,409.	
Disability Income					
<i>Income Replacement</i>	75% of gross weekly wages to maximum \$300/week; 104 weeks for temporary disability; lifetime for total disability.*	90% of net income based on gross annual income of maximum \$94,587/year.**	\$429/week for total disability; \$214/week for partial disability up to two years; maximum \$22,308/year.	90% of net wages based on gross annual income of maximum \$94,500/year.*	90% of net wages based on gross annual income of maximum \$72,500/year; indexed.*
<i>Non-earners</i>	N/A	After 180 days, will receive at least minimum wage if still disabled.	\$429/week for total disability; \$214/week for partial disability up to two years; maximum \$22,308/year.	After 180 days, will receive at least minimum wage.	After 180 days, will receive at least minimum wage.
<i>Homemaker</i>	\$145/week, up to 104 weeks.	After 180 days, will receive at least minimum wage if still disabled.	\$429/week for total disability; \$214/week for partial disability up to two years; maximum \$22,308/year.	N/A	N/A

Death Benefits					
<i>Surviving Spouse</i>	Death following a collision of: Head of household \$5,000, plus \$145/week up to 104 weeks; Partner/ Spouse of head of household \$2,500, plus \$145/week up to 104 weeks.	45% of deceased's net income to a maximum gross salary of \$94,587 per year.	45% of deceased's net income to a maximum gross salary of \$94,587 per year.	Death any time after injury: Depends on wage and age of deceased and range from \$61,706 to \$472,500.	Death any time after accident: Benefits depend on gross annual income multiplied by a factor between one and five, depending on age of the victim; range from \$69,102 to \$362,500.
<i>Surviving Dependent</i>	Death following a collision of: Head of household \$1,000, plus \$35/week up to 104 weeks to each child; Partner/ Spouse of head of household: \$2,500, plus \$145/week up to 104 weeks to each child.	5% of the deceased's net income per dependent child.	5% of the deceased's net income per dependent child.	Death any time after injury: Depends on the dependant's age at time of accident and range from \$29,309 to \$53,993, plus \$26,995 for a disabled dependent.	Death any time after accident: Benefits depend on dependent child's age; Range from \$32,822 to \$60,466.
<i>No Dependent</i>	N/A	\$15,620 maximum per survivor/estate; \$70,293 maximum total payable.	Up to \$13,333 to estate.	Death any time after injury: Up to \$13, 741 per survivor.	Death any time after accident: If there is no surviving spouse/dependant, parents or estate receive \$55,386.
<i>Parent/Guardian</i>	Death following a collision of dependent child: according to age, maximum \$1,500.	Death of dependent child: \$31,240.	N/A	N/A	Death any time after accident: If there is no surviving spouse/dependant, parents or estate receive \$55,386.
Impairment benefits	N/A	Up to \$195,257 /person for non-catastrophic injury and up to \$238,479/person for catastrophic injury.	Up to \$13,333/person for non-catastrophic injury; Up to \$173,333/person for catastrophic injury.	Minimum \$770/week up to \$154,261 for non-catastrophic injury; Up to \$243,580 for catastrophic injury.	Up to \$242,311.

Right to sue for pain and suffering?	Yes	Yes	Yes, subject to deductible of \$5,000.	No	No
Right to sue for economic loss in excess of no-fault benefits?	Yes	Yes	Yes	Yes	No

Sources

- ICBC Autoplan Insurance, accessed at: <http://www.icbc.com/autoplan/Documents/autoplan-insurance.pdf>; Guide to Autopac, accessed at: <http://www.mpi.mb.ca/en/PDFs/PolicyGuide2017.pdf>;
- Basic Personal Injury Protection Plan (PIPP) Benefits, accessed at: <https://www.mpi.mb.ca/en/Claims/BI/Pages/benefits.aspx>; Services and Support Guide for Fatality Claims, accessed at: <https://www.mpi.mb.ca/en/PDFs/SupportGuideFatalityClaims.pdf>; SGI Canada Personal Injury Coverage, accessed at: <https://www.sgi.sk.ca/individuals/registration/personalautoinjury/>;
- Your Guide to No Fault Coverage, 2017, accessed at: https://www.sgi.sk.ca/pdf/guide_nofault_2017.pdf; Your Guide to Tort Coverage, 2017, accessed at: https://www.sgi.sk.ca/pdf/guide_tort_2017.pdf;
- SGI Auto Pak Policy booklet, 2017, accessed at: http://www.sgicanada.ca/sk/pdf/booklets/2017_auto_pak.pdf;
- Quebec Auto Insurance Policy Form Q.P.F. No.1, March 1, 2014, accessed at: https://lautorite.qc.ca/fileadmin/lautorite/professionnels/formulaires-professionnels/assureur/automobile/qpf_1.pdf
- The Insurance Policy for All Quebecers: Accident Victim, accessed at: www.saaq.gouv.qc.ca/en/accident_victim/insurance_policy/index.php Calculation of Death Benefits, 2017, accessed at: www.saaq.gouv.qc.ca/en/accident_victim/insurance_policy/death_table.php;
- IBC Fact Book 2017, http://assets.ibc.ca/Documents/Facts%20Book/Facts_Book/2017/Fact-Book-2017.pdf.

Notes

- * Nothing for first seven days of disability.
- ** Nothing for first seven days of disability unless catastrophically injured.

TABLE A2 *Factors Affecting Insurance Prices by Province*

CRITERIA	PRIVATE							PUBLIC		
	AB	ON	NB	NS	PEI	NL	BC	SK	MB	QC
Personal Profile										
Age	Yes	Yes	No	No	Yes	No	No	No	No	Public: No; Private: Yes
Marital Status	Yes	Yes	No	No	*	No	No	No	No	Public: No; Private: *
Gender	Yes	Yes	No	Yes	*	No	No	No	No	Public: No; Private: Yes
Driving Record	Yes	Yes	Yes	Yes	Yes	Yes	Yes	Yes	Yes	Yes
Claim record of Policy Holder	Yes	Yes	Yes	Yes	Yes	Yes	Yes	Yes	Yes	Yes
Vehicle										
Make, Model and Year of Vehicle	Yes	Yes	Yes	Yes	Yes	Yes	Yes	Yes	Yes	Yes
Rate Class	Yes	Yes	Yes	Yes	Yes	Yes	Yes	Yes	Yes	Yes
Territory	Yes	Yes	Yes	Yes	Yes	Yes	Yes	No	Yes	Yes
Optional Coverage										
Optional Coverage	Yes	Yes	Yes	Yes	Yes	Yes	Yes	Yes	Yes	Yes
Amount of Deductible Paid	Yes	Yes	Yes	Yes	Yes	Yes	Yes	Yes	Yes	Yes
Discounts and Savings	Yes	Yes	Yes	Yes	Yes	Yes	Yes	Yes	Yes	Yes

Sources

- Age Rating in Auto Insurance, Actuarial Equity or Unfair Discrimination? (2007), accessed at: <http://www.contingencies.org/septoct07/age.pdf>; Alberta AIRB Factors that Affect Premiums, accessed at: <http://www.airb.alberta.ca/drivers/factors.aspx>;
- Alberta AIRB Ways to Lower Your Premium, accessed at: http://www.airb.alberta.ca/drivers/ways_to_lower.aspx; How has your Alberta auto insurance premium been determined, accessed at:
- <http://www.melochemonnex.com/car-insurance/articles/autoinfo-alberta>;

- ICBC Autoplan Insurance Guide (For policies with an effective date before Sept. 11, 2016), accessed at: <http://www.icbc.com/autoplan/Documents/autoplan-insurance.pdf>; ICBC Autoplan Insurance, What Affects Your Autoplan Premium? accessed at: <http://www.icbc.com/autoplan/costs/Pages/Default.aspx>;
- MPI Guide to Autopac 2017 (Effective March 1, 2017), accessed at: <https://www.mpi.mb.ca/en/PDFs/PolicyGuide2017.pdf>; Final Report on Public Automobile Insurance in New Brunswick - Appendix C, accessed at: http://www.gnb.ca/legis/business/committees/reports/2004auto/PDF/Appendix_A_J-e.pdf;
- NEW BRUNSWICK REGULATION 2004-139 under the Insurance Act (O.C. 2004-530), accessed at: <https://www.canlii.org/en/nb/laws/regu/nb-reg-2004-139/latest/nb-reg-2004-139.html>;
- Communication New Brunswick, Justice and Consumer Affairs, News Release: New auto insurance territories announced (07/07/11), accessed at: <http://www.gnb.ca/cnb/news/jus/2007e0898ju.htm>;
- News Releases Government of Newfoundland & Labrador—Canada, Government Services: Province Recognized for One of the Lowest Auto Insurance Premiums in the Country, accessed at: <http://www.releases.gov.nl.ca/releases/2007/gs/0216n03.htm>;
- ICBC Buying Auto Insurance: How Auto Insurance Premiums Are Calculated, accessed at: <http://www.ibr.ca/nl/auto/buying-auto-insurance>; A Consumer's Auto Insurance Guide 2nd Edition, accessed at: <http://www.novascotia.ca/finance/site-finance/media/finance/AutoInsuranceGuideConsumer.pdf>;
- Nova Scotia Insurance Review Board, Report: To the Governor in Council on a Study into the Use of Gender as a Rating Factor in Automobile Insurance in Nova Scotia (November 1, 2004), accessed at: <https://nsuarb.novascotia.ca/sites/default/files/nsirbgenderstudy.pdf>
- FSCO, How Your Auto Insurance Rates are Set, accessed at: <https://www.fSCO.gov.on.ca/en/auto/brochures/Pages/how-your-auto-insurance-rates-are-set.aspx>;
- Prince Edward Island, Regulatory & Appeals Commission, FAQ: Auto Insurance Regulation, accessed at: <http://www.irac.pe.ca/document.aspx?file=faq/documents/auto-insurance-faq.asp>,
- IBC An update from Prince Edward Island's home, Auto and Business Insurers 2015, accessed at: http://assets.ibr.ca/Documents/Facts%20Book/Industry_Updates/2015/PEI-SOI.pdf;
- 2014 Final Report on Public Automobile Insurance in New Brunswick - Appendix A, accessed at: http://www.gnb.ca/legis/business/committees/reports/2004auto/PDF/Appendix_A_J-e.pdf;
- Kanetix, Car insurance in Quebec: A two-pronged approach, accessed at: <https://www.kanetix.ca/quebec-car-insurance-canada>;
- Lowestrates.ca, Compare Car Insurance Quotes to Get the Lowest Rates in Saskatchewan, accessed at: <http://www.lowestrates.ca/insurance/auto/Saskatchewan>.

Note

* Not clear regarding effect of this factor on price.

TABLE A3 *Components of the Complete Insurance Package and Minimum Possible Liability Limits*

PROVINCE	THIRD PARTY LIABILITY	COLLISION AND COMPREHENSIVE DEDUCTIBLES	THIRD PARTY LIABILITY	COLLISION AND COMPREHENSIVE DEDUCTIBLES
Private				
Ontario (Toronto)	1,000,000	No Coverage	2,000,000	500, 500
Alberta (Calgary)	1,000,000	No Coverage	2,000,000	500, 500
Quebec (Montreal)	1,000,000	No Coverage	2,000,000	500, 500
NS (Halifax)	1,000,000	No Coverage	2,000,000	500, 500
PEI (Charlottetown)	1,000,000	No Coverage	2,000,000	500, 500
NB (Moncton)	1,000,000	No Coverage	2,000,000	500, 500
NL (St John's)	1,000,000	No Coverage	2,000,000	500, 500
Public				
Manitoba (Winnipeg)	200,000	500,500	2,000,000	200, 200
Saskatchewan (Saskatoon)	200,000	700,700	2,000,000	200, 200
British Columbia (Vancouver)	200,000	No Coverage	3,000,000	300, 300

Sources

- MPI Insurance, accessed at: [https://www.mpi.mb.ca/en/Reg-and-Ins/Insurance/Optional- Autopac/Pages/orv_additional_coverage.aspx](https://www.mpi.mb.ca/en/Reg-and-Ins/Insurance/Optional-Autopac/Pages/orv_additional_coverage.aspx)
- Basic plate insurance vs. Auto Pak, accesses at: <https://www.sgicanada.ca/sk/individuals/autoextension/compare.html>; SGI Canada Auto extension insurance, accessed at: <https://www.sgicanada.ca/sk/individuals/autoextension/index.html>; Autoplan Insurance, Basic Coverage, accessed at: <http://www.icbc.com/autoplan/basic/Pages/default.aspx>;
- Autoplan Insurance, Optional Coverage: Accessed at: <http://www.icbc.com/autoplan/optional/Pages/Default.aspx>.

Note

Complete Coverage for the provinces includes: Changing the Comprehensive Deductibles and Collision Deductible amounts respectively; Increased Third-Party Liability Limits; Loss of Use coverage and Rental vehicle coverage (excluding Manitoba).

TABLE A4a *Insurance Price Quotes for Private Provinces: Good Record*

COMPANY	ALBERTA, CALGARY				ONTARIO, TORONTO			
	Basic Coverage		Complete Coverage		Basic Coverage		Complete Coverage	
	Female	Male	Female	Male	Female	Male	Female	Male
**Lowest	660	660	1,162	1,162	1,185	1,234	1,575	1,629
Unspecified						1,285		1,727
Belairdirect					1,958	1,855	2,309	2,194
CAA					2,771	2,771	3,409	3,409
Coachman					3,460	3,460	4,071	4,071
Echelon					3,766	3,505	4,724	4,463
Economical	669	667	1,337	1,345	1,671	1,848	2,143	2,354
Johnson Home-Auto	698*	698*	1,223*	1,223*	1,696	1,696	1,930	1,930
PAFCO					3,948	3,948		
Pembridge	679	679	1,286	1,286	3,147	3,132	3,755	3,755
TD	822	839	1,492	1,549	1,917	1,682	2,240	2,010
Travelers Dominion					1,783	1,851	2,152	2,241
Wawanesa					2,183	2,183	2,589	2,589
SSQauto								
The Co-operators	771*	771*	1,643*	1,683*	1,725	1,661	2,343	2,268
Allstate	835	835	1,439	1,439	3,525	3,507	3,486	3,428
COSECO								
Intact	916	902	1,897	1,954	2,011	1,859	2,439	2,307
Millennium			1,265	1,265				
Desjardins	978	866	1,610	1,517	1,406		1,815	
Average	796	782	1,466	1,473	2,464	2,497	2,815	2,848

■ TABLE A4a continued: Insurance Price Quotes for Private Provinces: Good Record

COMPANY	MONCTON, NB				HALIFAX, NS				CHARLOTTETOWN, PEI				ST JOHNS, NL			
	Basic Coverage		Complete Coverage		Basic Coverage		Complete Coverage		Basic Coverage		Complete Coverage		Basic Coverage		Complete Coverage	
	Female	Male	Female	Male	Female	Male	Female	Male	Female	Male	Female	Male	Female	Male	Female	Male
**Lowest	774	774	956	956	658	658	1,120	1,120	391	391	993	993				
CAA	802	802	1,214	1,214												
Johnson Home-Auto	587*	587*	1,049*	1,049*	690*	690*	1,032*	1,032*	606*	606*	1,017*	1,017*	918*	918*	1,329	1,329
TD	745*	745*	1,085*	1,085*	653*	643*	1,114*	1,123*	440*	439*	1,213*	1,258*	1,106*	1,106*	1,791*	1,791*
The Co-operators	898*	898*	1,349*	1,349*	896*	883*	1,433*	1,421*	629*	629*	1,062*	1,062*	1,751*	1,751*	2,377*	2,377*
CAA Atlantic	843*	843*	1,283*	1,283*	658*	658*	1,130*	1,130*	391*	391*	1,002*	1,002*				
Allstate					924	924	1,162	1,162								
COSECO			1,099*	1,099*			1,146	1,190								
Average	775	775	1,180	1,180	764	760	1,170	1,176	517	516	1,074	1,085	1,258	1,258	1,832	1,832

Sources

1. Quotes were obtained from the Kanetix website (* indicates quotes obtained directly from the respective Insurance Companies website); Kanetix harvests quotes from different companies, but those companies do not necessarily quote for all cities.
2. ** Kanetix provides a "lowest rate" but does not identify it until the consumer calls for a quote.

Notes

1. All quotes exclude the respective registration costs and any applicable taxes in each province.
2. "Average" excludes "lowest unspecified rate".

TABLE 4Ab *Insurance Price Quotes for Private Provinces: Poor Record*

COMPANY	ALBERTA, CALGARY				ONTARIO, TORONTO			
	Basic Coverage		Complete Coverage		Basic Coverage		Complete Coverage	
	Female	Male	Female	Male	Female	Male	Female	Male
**Lowest	1,008	1,031	1,843	1,915	2,286	2,081	2,847	2,691
Belairdirect					4,402	4,123	5,159	4,847
CAA					6,572	6,572	7,809	7,809
Coachman					4,749	4,749	5,512	5,512
Echelon					5,243	4,979	6,408	6,144
Economical	1,236	1,236	2,688	2,688	3,393	3,755	4,148	4,572
Johnson Home-Auto	1,226	1,226	2,481	2,481				
PAFCO					4,482	4,482		
Pembridge	1,223	1,223	2,856	2,856	5,621	5,562	6,997	6,938
Travelers Dominion Product					2,896	3,022	3,476	3,639
Wawanesa					3,748	3,748	4,355	4,355
SSQauto								
The Co-operators					2,585	2,493	3,416	3,306
Intact	1,216	1,216	2,594	2,682	4,528	4,190	5,307	5,003
Allstate	1,216	1,216	2,862	2,991	6,370	6,298	7,802	7,730
Millennium			2,496	2,496				
Raptors Home+Auto					2,538	2,634	3,149	3,255
Average	1,223	1,223	2,663	2,699	4,394	4,354	5,295	5,259

TABLE A4b *continued: Insurance Price Quotes for Private Provinces: Poor Record*

COMPANY	MONCTON, NB				HALIFAX, NS				CHARLOTTETOWN, PEI			
	Basic Coverage		Complete Coverage		Basic Coverage		Complete Coverage		Basic Coverage		Complete Coverage	
	Female	Male	Female	Male	Female	Male	Female	Male	Female	Male	Female	Male
**Lowest	1,934	1,934	2,632	2,632	1,374	1,374	2,143	2,143	888	888	1,958	1,958
TD	933*	933*	1,432*	1,432*	856*	845*	1,464*	1,479*	554*	554*	1,545*	1,604*
CAA Atlantic	2,035*	2,035*	2,776*	2,776*	1,374*	1,374*	2,153*	2,153*	887*	887*	1,967*	1,967*
Average	1,484	1,484	2,104	2,104	1,115	1,110	1,809	1,816	721	721	1,756	1,786

Sources

1. Quotes were obtained from the Kanetix website (* indicates quotes obtained directly from the respective Insurance Companies website); Kanetix harvests quotes from different companies, but those companies do not necessarily quote for all cities.
2. ** Kanetix provides a "lowest rate" but does not identify it until the consumer calls for a quote.

Notes

1. All quotes exclude the respective registration costs and any applicable taxes in each province.
2. "Average" excludes "lowest unspecified rate".

■ **TABLE A4c** *Insurance Price Quotes for Public Provinces: Good Record*

COMPANY	BRITISH COLUMBIA, VANCOUVER		SASKATCHEWAN, SASKATOON		MANITOBA, WINNIPEG	
	Basic Coverage	Complete Coverage	Basic Coverage	Basic Coverage	Complete Coverage	Complete Coverage
	ICBC Basic Autoplan	ICBC	SGL Basic Plate	ICBC Basic Autoplan	ICBC	MPI
Manitoba Public Insurance					1,167	1,451
Saskatchewan Government Insurance			917	1,125		
Affinity Insurance Services Inc Lakewood			917	1,125		
Affinity Insurance Services Inc Preston Ave.			917	1,142		
Life Line General Insurance Inc			917	1,125		
Hoffmann Kool Insurance			917	1,135		
Galon Insurance Brokers			917	1,135		
Westland Insurance Group Ltd	1,089	1,618				
Affinity Insurance Services	1,072	2,372				
Pemberton Insurance Corporation	1,064	1,855				
Hicks Pacific Centre Insurance Service Ltd	1,123	1,848				
BCAA	1,089	1,620				
Thompson Insurance Centre (1997) Inc	1,082	1,807				
Average	1,087	1,853	917	1,131	1,167	1,451

Sources

1. Manitoba Public Insurance (MPI) quotes where obtained from the MPI website.
2. Saskatchewan Government Insurance "(SGL) Basic Plate" quotes for Saskatchewan were obtained from the SGL website; The "SGL Autopak" quotes were obtained from the individual brokers listed in the table.
3. The ICBC Basic Autoplan and Optional Autoplan where both obtained from each individual broker listed.

Note

All quotes exclude the respective registration costs and any applicable taxes in each province.

TABLE A4d *Insurance Price Quotes for Public Provinces: Poor Record*

COMPANY	BRITISH COLUMBIA, VANCOUVER		SASKATCHEWAN, SASKATOON		MANITOBA, WINNIPEG	
	Basic Coverage	Complete Coverage	Basic Coverage	Complete Coverage	Basic Coverage	Complete Coverage
	ICBC Basic Autoplan	ICBC Optional Autoplan	SGI Basic Plate	SGI Autopak	MPI Basic Autopak	MPI Optional Autopak
Manitoba Public Insurance					1,239	1,541
Saskatchewan Government Insurance			978			
Affinity Insurance Services Inc Lakewood			978	1,236		
Affinity Insurance Services Inc Preston Ave.			978	1,253		
Life Line General Insurance Inc			978	1,207		
Hoffmann Kool Insurance			978	1,226		
Galon Insurance Brokers			978	1,226		
Westland Insurance Group Ltd	1,594	1,743				
Affinity Insurance Services	1,618	1,743				
Pemberton Insurance Corporation	1,514	2,640				
Hicks Pacific Centre Insurance Service Ltd	1,573	2,610				
BCAA	1,594	2,556				
Thompson Insurance Centre (1997) Inc	1,533	2,569				
Averages	1,571	2,310	978	1,230	1,239	1,541

Sources

See Table A4c.

Note

All quotes exclude the respective registration costs and any applicable taxes in each province.

TABLE A5 Sources for Tables 2 and 3 in text and Graph 2

Sources Tables 2 and 3:

- 2015 GISA Automobile Exhibit Introduction, accessed at: <https://www.gisa.ca/StatisticalInformation>; 2015 GISA Actual Loss Ratio Exhibits, accessed at: <https://www.gisa.ca/StatisticalInformation>;
- 2009 to 2015 ICBC Annual Service Plan Reports, accessed at: <http://www.icbc.com/about-icbc/company-info/Pages/Annual-Report.aspx>; 2008 ICBC Annual Service Plan Report, accessed at: http://www.fin.gov.bc.ca/ocg/pa/08_09/Sup%20E/pdf/ICBC_Fin_Stmts.pdf;
- ICBC Consolidated Financial Statements As At December 31, 2007, accessed at: http://www.fin.gov.bc.ca/ocg/pa/07_08/Sup%20E/pdf/ICBC_Fin_Stmts.pdf; ICBC Consolidated Financial Statements As At December 31, 2006, accessed at: http://www.fin.gov.bc.ca/ocg/pa/06_07/Sup%20E/pdf/ICBC_Fin_Stmts.pdf;
- 2007 to 2015-16 Saskatchewan Auto fund Annual Reports, accessed at: <https://www.sgi.sk.ca/about/publications/index.html>; 2007/2006 to 2016/15 MPI Annual Reports, accessed at: <https://www.mpi.mb.ca/en/Newsroom/Pages/annualreports.aspx>;
- 2012/11 to 2016/15 MPI Annual Financial Statements, accessed at: <https://www.mpi.mb.ca/en/Newsroom/Pages/annualreports.aspx>.

Sources Graph 2:

- 2010 to 2016 Ontario Road Safety Annual Report, accessed at: <http://www.ontario.ca/orsar>;
 - 2002 to 2014 Alberta Collision Statistics, accessed at: <http://www.transportation.alberta.ca/3119.htm>;
 - 2017 ICBC Quick Statistics for the Media, accessed at: <http://www.icbc.com/about-icbc/newsroom/Pages/Statistics.aspx>; 2011 to 2016 ICBC Quick Statistics for the Media, accessed at: http://www.integritybc.ca/?page_id=6149;
 - 2002 to 2007 ICBC Traffic Collision Statistics: Police-attended Injury and Fatal Collisions, accessed at: http://www.integritybc.ca/?page_id=6157;
 - SAAQ Bilan 2015 - Accidents, parc automobile, permis de conduire, accessed at: <https://saaq.gouv.qc.ca/fileadmin/documents/publications/espace-recherche/dossier-statistique-bilan-2015.pdf>;
 - SAAQ Bilan 2016 - Accidents, parc automobile, permis de conduire, personal communication with E. Turmel (May 19, 2017); 2012 to 2015 MPI Traffic Collision Statistics Report, accessed at: <https://www.mpi.mb.ca/en/Rd-Safety/Overview/Pages/TrafficCollisionStatisticsReport.aspx>;
 - 2012 to 2015 SGI TAIS Annual Report, accessed at: <https://www.sgi.sk.ca/about/publications/collisionstats/index.html>; 1999 to 2015: Statistics Canada, CANSIM Table 405-0004, Total Road Motor Vehicles.
-