

The Distribution of NSERC Funds: 1986-87

Volume 15, Number 2, June 1988

URI: https://id.erudit.org/iderudit/geocan15_2art15

[See table of contents](#)

Publisher(s)

The Geological Association of Canada

ISSN

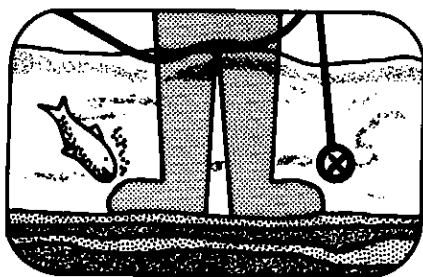
0315-0941 (print)

1911-4850 (digital)

[Explore this journal](#)

Cite this article

(1988). The Distribution of NSERC Funds: 1986-87. *Geoscience Canada*, 15(2), 149–150.



The Distribution of NSERC Funds: 1986-87

From a Grantee *

* Author's identity withheld upon request

Last year in *Geoscience Canada* (Anon, 1986), I published an analysis of the distribution of NSERC operating funds. I argued that despite obvious limitations, this is a fairly reliable way of comparing departments, because most workers rely on NSERC for the major part of their research funding. The data are publically available in the volume published by NSERC (1987). Here I present a similar analysis for the year 1986-87.

Table 1 shows the average Operating Grant (total \$\$ divided by number of recipients) given to all Universities by Committee 10 (Earth Sciences). This committee covers geology, geophysics, geography, oceanography, as well as a small number of grants given to workers in departments such as biology, zoology, mathematics, etc. To make comparisons within the core of Geology and Geophysics (hereafter the "GG Core"), I recalculated the figures (Table 2) excluding grants made to faculty outside the GG Core (i.e., excluding geography, oceanography, etc.), and excluding supplements made to University Research Fellows. About 73.1% of Committee 10's money is given within the GG Core. The GG Core includes the Geophysics Departments at York and Western Ontario, and people identified as working in geophysics (despite assignments to various departments) at UBC, Alberta and Toronto.

As a further comparison, to identify granting levels on a *Departmental* basis rather than an individual basis, I divided the total \$\$ not by the number of grantees, but by the total number of faculty in each GG core department (Table 3). The faculty numbers were derived from the AGI Directory of Geology Departments (1986), and include only faculty listed under the titles of Professor, Associate Professor, Assistant Professor or "on leave". I did not include Emeritus Professors, adjuncts, lecturers, research assistants, etc. Exact head counts were difficult in some cases (and were not attempted for "Land Resource Science" at Guelph). York University also disappears from Table 3 because it is not listed in the AGI Directory.

The mean value of the grant is almost the same in Tables 1 and 2; \$22,688 (1985 - \$22,864) for all departments and \$23,669 (1985 - 23,553) for the GG Core. Note that average grants were essentially the same as last year.

Comparisons of Tables 1, 2 and 3 between 1985 and 1986 show some shuffling of departmental positions, probably largely due to movements of senior faculty, and partly due to retirements of senior faculty and their replacement by more junior (fewer \$\$) faculty. In Table 1, Laurentian, New Brunswick and Waterloo move into the top 10 in 1986, at the expense of Dalhousie, Memorial and U. de Montréal (departments listed alphabetically). Laurentian's position is based upon only one grant, and the overall depart-

ment placing is better seen in Table 3. In Table 2, Laurentian and York join the top 10, displacing Guelph and U. de Montréal from last year. In Table 3, the top 10 departments of 1985 are also the top 10 for 1986, although there are minor changes in the order.

References

- AGI, 1986, Directory of Geoscience Departments, United States and Canada: American Geological Institute, Alexandria, Virginia, 232 p.
- Anon, 1986, The distribution of NSERC funds: *Geoscience Canada*, v. 13, p. 266-269.
- NSERC, 1987, List of scholarships and grants in aid of research (Appendix to the Report of the President): Minister of Supply and Services, Canada, 806 p.

Table 1 Average per capita grant awarded by Committee 10.

University	Average Grant (\$)	No. of grantees
McMaster	30,979	21
Laurentian	28,800	1
UBC	28,365	33
Alberta	28,138	31
Toronto	27,783	43
Western Ontario	26,196	22
New Brunswick	26,173	8
Saskatchewan	25,888	11
Waterloo	25,097	19
Victoria	24,991	3
Memorial	24,742	30
Guelph	22,572	8
Manitoba	22,364	12
École Polytechnique	21,888	5
Dalhousie	21,884	26
Calgary	21,150	19
U. de Montréal	20,556	14
York	20,433	10
McGill	20,051	23
Simon Fraser	19,484	3
Ottawa	19,122	13
Queen's	18,927	23
Sherbrooke	17,923	3
U.Q. à Montréal	17,874	9
Carleton	17,709	13
U.Q. à Rimouski	17,316	5
Lakehead	17,227	7
St. Mary's	16,730	4
Acadia	15,435	3
Brock	15,019	2
Laval	14,521	13
INRS Georessources	14,364	4
Windsor	14,104	8
Regina	14,100	4
Trent	11,700	4
Concordia	11,680	1
St. Francis Xavier	11,680	1
U.Q. à Chicoutimi	9,586	4
Lethbridge	7,680	1
Cape Breton	6,720	1
Mt. Allison	5,908	2
Brandon	984	1

Table 2 Average per capita grant awarded in GG core.

Geology/Geophysics Department	Average grant (\$)	No. of grantees
York	36,462	3
McMaster	33,370	13
Western Ontario	30,731	17
Alberta	30,697	25
British Columbia	29,474	20
Laurentian	28,800	1
Saskatchewan	27,228	10
Waterloo	26,764	16
Memorial	26,263	26
Toronto	25,763	29
New Brunswick	25,741	7
Guelph	23,280	2
U. de Montréal	23,081	10
McGill	22,411	16
Manitoba	11,125	11
École Polytechnique	21,888	5
Ottawa	21,506	9
Queen's	19,423	18
Carleton	19,392	11
Calgary	18,918	14
U.Q. à Montréal	18,911	7
Dalhousie	18,201	12
Lakehead	17,227	7
St. Mary's	16,730	4
Regina	16,133	3
Acadia	15,435	3
Brock	15,019	2
Laval	14,904	5
Windsor	14,728	7
INRS Georessources	14,364	4
Concordia	11,680	1
St. Francis Xavier	11,680	1
U.Q. à Chicoutimi	9,586	4
Lethbridge	7,680	1
Cape Breton	6,720	1
Mt. Allison	5,908	2
Brandon	984	1

Table 3 Average grant per Department, GG Core.

Geology/Geophysics Department	Average Grant (\$)	Number of Faculty *
McMaster	31,320	14
British Columbia	29,474	20
Toronto	23,504	44
Western Ontario	22,714	23
McGill	22,411	16
Waterloo	21,397	20
Alberta	21,317	36
Memorial	19,896	33
U. de Montréal	17,755	13
Ottawa	17,596	11
Lakehead	17,227	7
St. Mary's	16,730	4
Manitoba	15,211	16
Queen's	15,200	23
Saskatchewan	15,127	18
Dalhousie	14,561	15
Carleton	14,221	15
New Brunswick	13,860	13
Calgary	11,036	24
Windsor	10,310	10
U.Q. à Montréal	8,273	16
INRS Georessources	7,182	8
Regina	6,914	7
École Polytechnique	6,840	16
Cape Breton	6,720	1
Acadia	6,615	7
Laval	4,968	15
U.Q. à Chicoutimi	4,260	9
Brock	3,338	9
Mt. Allison	2,954	4
Laurentian	2,888	10
St. Francis Xavier	2,336	5
Concordia	1,947	6
Brandon	331	3

* Number of Faculty counted in the 1986 AGI Directory of Geology Departments, and includes only Professors, Associate Professors, Assistant Professors and faculty listed as "on leave".

Guelph is not listed because of the difficulty of counting GG Core Faculty in the Department of Land Resource Science.

York is not listed because the number of faculty in the GG Core is not given in the AGI Directory.