

A model for uranium mobility in groundwater in the Grand Pré region, Nova Scotia, Canada

Mary A. Samolczyk, Ian S. Spooner and Clifford R. Stanley

Volume 48, 2012

URI: <https://id.erudit.org/iderudit/ageo48art01>

[See table of contents](#)

Publisher(s)

Atlantic Geoscience Society

ISSN

0843-5561 (print)

1718-7885 (digital)

[Explore this journal](#)

Cite this article

Samolczyk, M. A., Spooner, I. S. & Stanley, C. R. (2012). A model for uranium mobility in groundwater in the Grand Pré region, Nova Scotia, Canada. *Atlantic Geology*, 48, 1–13.

Article abstract

Elevated levels of uranium that surpass maximum allowable concentrations have been recognized in some well water samples throughout Nova Scotia. In this study we examine the influence of redox conditions and regional geology on the mobility of uranium in groundwater in the Grand Pré region, located in the eastern end of the Annapolis-Cornwallis Valley in southwestern Nova Scotia. The study site is underlain by carbon-rich shale and arkosic sandstone of the Late Mississippian Horton Bluff Formation and the arenaceous sandstone of the Triassic Wolfville Formation. Water samples from drilled wells were analyzed on site for various water quality parameters (pH, conductivity, temperature, dissolved oxygen) and in the laboratory to determine alkalinity and cation (72) and major anion (9) concentrations.

Several samples exceeded Health Canada (2011) limits for uranium (20 µg/L) with values up to 50.8 µg/L and aesthetic objectives (AO) for iron (up to 605 µg/L), manganese (up to 2.28 mg/L) and other cations. Data show that different redox conditions occur in the study area. The geospatial arrangement of the chemical data suggests that the lithology of the underlying aquifer strongly influences the availability of uranium in groundwater. Reduced groundwater in Horton Bluff sandstone typically contains elevated concentrations of Fe²⁺ and Mn²⁺, whereas groundwater containing high concentrations of U is found primary in oxidizing environments in quartz arenite sandstone units in the Wolfville Formation.

Consumption of groundwater in the Grand Pré region may pose a health risk; however, the level of risk remains unknown. This study emphasizes that in the area of Grand Pré, water that is considered aesthetically undesirable (containing high Fe and Mn) may pose less of a health risk (low U) than waters that are aesthetically pleasing.

A model for uranium mobility in groundwater in the Grand Pré region, Nova Scotia, Canada

MARY A. SAMOLCZYK¹, IAN S. SPOONER^{2*}, AND CLIFFORD R. STANLEY²

1. Department of Geoscience, University of Calgary, Calgary, Alberta T2N 1N4, Canada

2. Department of Earth and Environmental Science, Acadia University, Wolfville, Nova Scotia B4P 2R6, Canada

*Corresponding author <ian.spooner@acadiau.ca>

Date received: 06 September 2010 ¶ *Date accepted: 23 January 2012*

ABSTRACT

Elevated levels of uranium that surpass maximum allowable concentrations have been recognized in some well water samples throughout Nova Scotia. In this study we examine the influence of redox conditions and regional geology on the mobility of uranium in groundwater in the Grand Pré region, located in the eastern end of the Annapolis-Cornwallis Valley in southwestern Nova Scotia. The study site is underlain by carbon-rich shale and arkosic sandstone of the Late Mississippian Horton Bluff Formation and the arenaceous sandstone of the Triassic Wolfville Formation. Water samples from drilled wells were analyzed on site for various water quality parameters (pH, conductivity, temperature, dissolved oxygen) and in the laboratory to determine alkalinity and cation (72) and major anion (9) concentrations.

Several samples exceeded Health Canada (2011) limits for uranium (20 µg/L) with values up to 50.8 µg/L and aesthetic objectives (AO) for iron (up to 605 µg/L), manganese (up to 2.28 mg/L) and other cations. Data show that different redox conditions occur in the study area. The geospatial arrangement of the chemical data suggests that the lithology of the underlying aquifer strongly influences the availability of uranium in groundwater. Reduced groundwater in Horton Bluff sandstone typically contains elevated concentrations of Fe²⁺ and Mn²⁺, whereas groundwater containing high concentrations of U is found primary in oxidizing environments in quartz arenite sandstone units in the Wolfville Formation.

Consumption of groundwater in the Grand Pré region may pose a health risk; however, the level of risk remains unknown. This study emphasizes that in the area of Grand Pré, water that is considered aesthetically undesirable (containing high Fe and Mn) may pose less of a health risk (low U) than waters that are aesthetically pleasing.

RÉSUMÉ

Des niveaux élevés d'uranium qui dépassent les concentrations maximales admises ont été détectés dans certains échantillons d'eau de puits en Nouvelle Écosse. Dans cette étude, nous examinons les effets de la réduction-oxydation et de la géologie régionale sur la mobilité de l'uranium dans l'eau souterraine de la région de Grand Pré, dans l'extrémité est de la vallée d'Annapolis-Cornwallis, dans le sud ouest de la Nouvelle Écosse. Le site étudié repose sur du schiste carbonneux et du grès arkosique de la Formation de Horton Bluff, du Mississippien tardif, et sur du grès arénacé de la Formation de Wolfville, du Trias. Les échantillons d'eau de puits creusés ont été analysés sur place pour ce qui est de divers paramètres de qualité de l'eau (pH, conductivité, température, oxygène dissous) et des analyses ont eu lieu en laboratoire pour établir l'alcalinité et les concentrations de cations (72) et de principaux anions (9).

Plusieurs échantillons dépassaient les limites permises par Santé Canada (2011), en ce qui concerne la teneur en uranium (20 µg/L), certaines teneurs ayant atteint 50,8 µg/L. Il en allait de même en ce qui concerne les critères esthétiques pour le fer (des teneurs ayant atteint 605 µg/L), le manganèse (des teneurs ayant atteint 2,28 mg/L) et d'autres cations. Les données indiquent que divers phénomènes de réduction-oxydation surviennent dans le secteur étudié. Le contexte géospatial des données chimiques porte à croire que la lithologie de la couche aquifère sous jacente exerce une forte influence sur la disponibilité de l'uranium dans l'eau souterraine. L'eau souterraine qui a subi une réduction dans le grès de Horton Bluff contient généralement des concentrations élevées de Fe²⁺ et de Mn²⁺, tandis que l'eau souterraine à forte concentration d'uranium est surtout observée dans les milieux oxydants de grès de quartz-arénite de la Formation de Wolfville.

La consommation de l'eau souterraine dans la région de Grand Pré peut poser un risque pour la san-

té, mais le degré de risque demeure inconnu. Cette étude met en lumière le risque moindre pour la santé (faible teneur en U) de l'eau dans la région de Grand Pré, qui a une apparence pouvant laisser à désirer (elle a une forte teneur en Fe et en Mn), comparativement à d'autres sources d'eau d'apparence plus agréable.

[Traduit par la rédaction]

INTRODUCTION

Grand Pré is a rural community located on the southern shore of the Minas Basin in Kings County, Nova Scotia. The town site is located within Canada's first designated Historic Rural District and is also a candidate for UNESCO's World Heritage List. Water needs are supplied by privately owned drilled wells. Residents and businesses in the area have expressed concerns regarding elevated concentrations of natural contaminants in drinking water, most notably uranium. Nova Scotia does not have a comprehensive program for monitoring private well water quality, and as a result private well owners are responsible for the management and treatment of their drinking water (Nova Scotia Department of Environment and Labour 2005). Because no previous groundwater quality study has been done in the Grand Pré region to investigate these concerns, this study was undertaken to gain an understanding of the controls on uranium concentrations and mobility within aquifers underlying Grand Pré.

The presence of anomalous concentrations of uranium, radium, and radon in the Carboniferous Horton Group and underlying basement rocks of Atlantic Canada has been known for many years (e.g., Ryan and O'Beirne-Ryan 2006). During the late 1970s and early 1980s exploration for uranium in Nova Scotia was undertaken by numerous companies and resulted in several significant discoveries. However, in 1982 public pressure resulted in a moratorium on all exploration and prospecting for uranium in Nova Scotia that continues to the present.

Recent research involving the occurrence of uranium in groundwater in the region includes the identification of uranium in surface and shallow subsurface water in the Avon Valley in central Nova Scotia by Kronfeld *et al.* (2004). In this study, uranium concentrations in ground and surface waters were found to be generally low, except immediately adjacent to weathering uranium occurrences. Kronfeld *et al.* (2004) suggested that relatively high precipitation rates in the region and the high permeabilities of the sandstone aquifers in the Horton Group might result in persistent flushing. In a study of water derived primarily from these Horton Group aquifers, Page (1999) found a strong positive correlation between dissolved uranium and radon. Research by O'Beirne-Ryan and Zentilli (2003, 2006) examined the weathered surfaces on the South Mountain Batholith and their contribution of uranium and radon to groundwater in

the region. Areas of high uranium concentration in Nova Scotia are associated with intrusive rock types, principally the South Mountain batholith in southwestern Nova Scotia. Both studies recognized that natural contaminants are mobilized through water-rock interactions as groundwater flows from recharge zones in granite- and slate-dominated highlands to sedimentary lowlands (Kronfeld *et al.* 2004). Ryan and O'Beirne-Ryan (2006) noted that numerous uranium occurrences are located in the area near Windsor, Nova Scotia. These occurrences can be divided into two types: (1) carbon- and pyrite-related quartz-sandstone-hosted type and (2) hematite arkosic sandstone-hosted type. The aerial extent of Horton Group strata throughout eastern Canada establishes the potential that similar environments for uranium accumulation likely occur elsewhere (Ryan and O'Beirne-Ryan 2006).

This study focuses on determining the influence of the physical and chemical properties of the local aquifers in Grand Pré on the concentration and mobility of uranium. Triassic Wolfville Formation sandstone and Carboniferous Horton Bluff Formation sandstone and shale underlie the study site but their distribution is poorly constrained (Fig. 1). Elevated levels of uranium may pose a local health risk but no research has been conducted to determine the influence that local geology may have on ground water concentrations.

LOCAL BEDROCK GEOLOGY

Slate of the Cambrian-Early Ordovician Halifax Group, carbon-rich shale and sandstone of the Late Devonian-Early Mississippian Horton Bluff Formation, and arenaceous sandstone of the Late Triassic Wolfville Formation all underlie the Grand Pré region (Fig. 1). The Halifax Group is composed of slate, metasiltstone, and minor quartz metawacke deposited in a deep marine environment (Williams 1995) and is unconformably overlain by Horton Group sandstone and shale. The Horton Group is host to the best-documented occurrences of uranium in southwest Nova Scotia (Ryan and O'Beirne-Ryan 2006) and is comprised of the Horton Bluff Formation (HBF) and the overlying Cheverie Formation. The HBF was deposited in a fluvial deltaic and floodplain environment; and coal measures are common (Martel

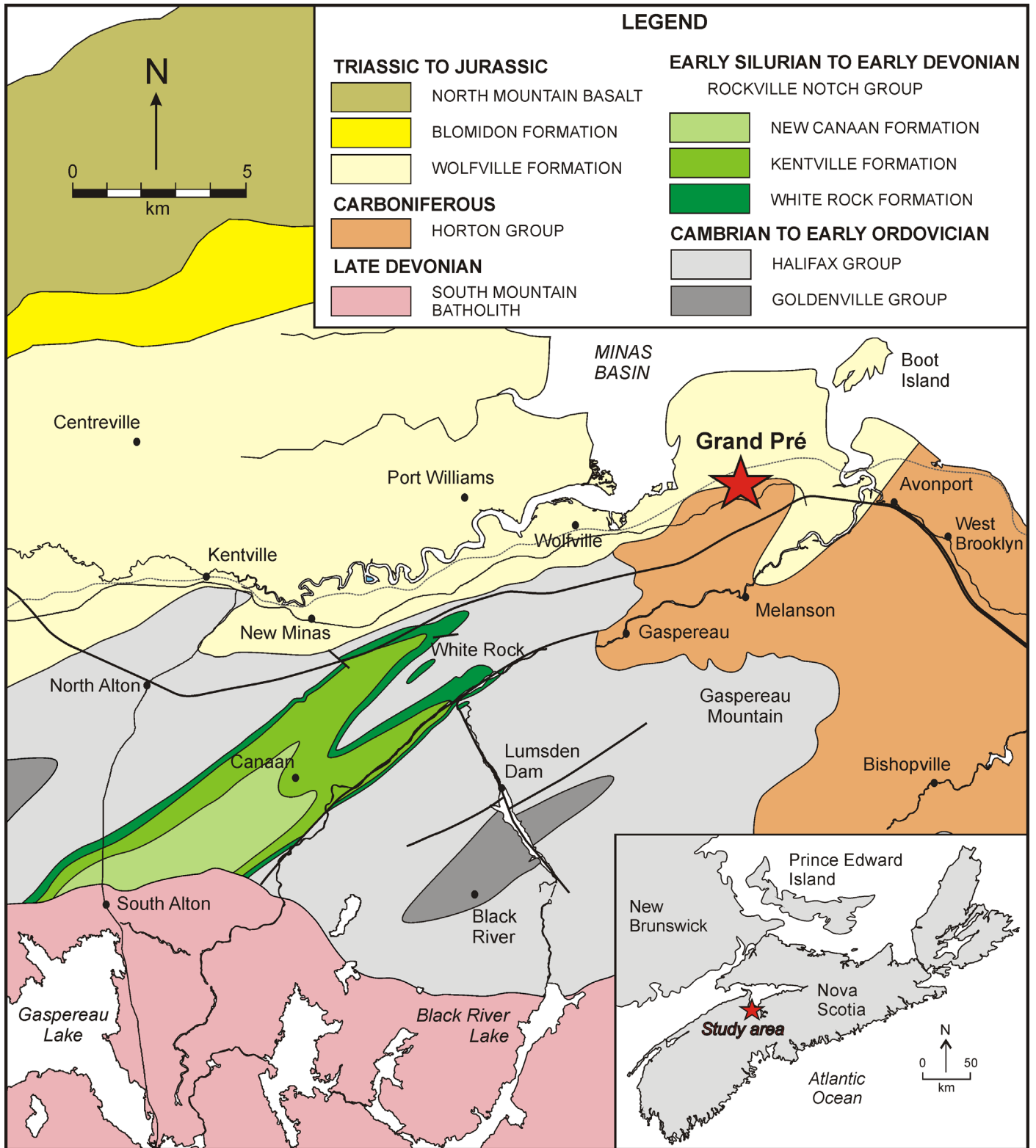


Fig. 1. A bedrock map of the lithologies that may influence groundwater in Grand Pré, Nova Scotia. Water likely flows in a net northward direction. Map modified from White (2010). Red star on inset map shows location of study area in Nova Scotia.

and Gibling 1996). The lower unit of the HBF is composed of coarse sandstone and conglomerate and interbedded grey siltstone and mudstone. The middle unit is dominantly mudstone, fissile shale and siltstone. A lacustrine influence in the middle and upper units is indicated by the presence of fresh water fish, plant debris, and thin pedogenic carbonates. The presence of thin horizons containing glauconite grains, marine-affinity bivalves, and crinoids suggests a distal marine influence at various times (Ryan 1998). The upper unit of the HBF and the overlying Cheverie Formation do not appear to be present in the Grand Pré region (Ferguson 1983). Instead, an unconformable contact between the middle unit of the HBF and the overlying Triassic Wolfville Formation occurs in the Grand Pré area (Moore and Ferguson 1986).

The Wolfville Formation is composed of interbedded and stratified sandstone, pebbly conglomerate, and minor mudstone, and was deposited in an arid braided river–aeolian environment (Leleu *et al.* 2009). At and near its base are pebbly and conglomeratic units with clasts derived from the metamorphic and granitic highlands nearby, and from material eroded from adjacent Early Carboniferous clastic sedimentary strata. The Wolfville Formation contains both calcite and silica cement and commonly displays well developed porosity (> 20 %).

GLACIAL GEOLOGY

The type and distribution of surficial sediments in the study area is a reflection of the glacial processes that dominated the area during the Late Wisconsinan (ca. 22 ka–12 ka). Both regional and local ice sheets were active and resulted in a complex ice-flow history. The last regional ice advance in western Nova Scotia was most likely towards the north (Scotia Phase; Stea *et al.* 1992), although drumlin orientation indicates that an earlier westerly advance may have had a strong influence on sediment deposition and deformation. Drumlins have relief of up to 20 m and are composed of clay-rich Lawrencetown Till derived from Paleozoic sediments to the east. Till thickness is highly variable; in low areas between drumlins, bedrock can be within 2 m of the surface, whereas elsewhere up to 20 m of till has been recorded in well logs. A very thin veneer (<1 m) of coarser grained ablation till is also common in the study area and is characterized by angular, locally derived clasts and a silty-to-sandy matrix. Kames and associated ice-contact deposits are rare.

HYDROSTRATIGRAPHY

The study area is underlain primarily by the shallow to moderately north-dipping porous Horton Bluff and

Wolfville formations. The precise location of the east-west-trending contact between these two units is uncertain due to a lack of surface outcrop and inconclusive well logs. To the south and up-slope of the study area, highly fractured Halifax Group with minimal primary porosity dominates (Fig. 1). These bedrock units are commonly overlain by <10 m of till, although greater thicknesses can occur at the crest of drumlins. Five significant hydrostratigraphic units are likely to affect groundwater in the Grand Pré study area.

The Halifax Group outcrops approximately 5 km south of the study area. These rocks have low primary porosity (<5%; Trescott 1968) and variable groundwater flow is dominated by secondary fracture systems controlled by the attitude of the rocks (Trescott 1968). Well yields range from 0.1–150 igpm (imperial gallons per minute) with a mean of 4.6 igpm and anomalous concentrations of Fe and Mn are common.

About 10 km south of the study area the Devonian South Mountain Batholith (SMB) forms a regional highland composed primarily of biotite granite. This highland is the primary source rock for HBF sediments (Martel and Gibling 1996). The amount of recharge through the SMB is probably not very large on a regional basis. Previous studies on recharge in this area suggest that the majority of recharge comes as downward flow through the Quaternary sediments throughout the region (Rivard *et al.* 2007).

Groundwater is stored in and transmitted through the SMB through surface-parallel joints that decrease in density with depth (Trescott 1968). Well yields vary from 0.2–220 igpm, with a mean of about 5.7 igpm. The pH of groundwater in the SMB granite is generally between 4.5–5.5. The SMB contains numerous uranium deposits and occurrences (Ryan and O’Beirne-Ryan 2006). These deposits are interpreted as having been formed due to fluid migration in the late stages of granitoid emplacement and occur within shear and fracture zones in altered rocks, either in the granitoid rocks or as peribatholithic occurrences in the metasedimentary country rocks of the Meguma Group (MacDonald 2001).

The most significant aquifers in the study region occur within porous sandstone and conglomerate of the Wolfville Formation and carbonaceous siltstone and sandstone of the HBF (Rivard *et al.* 2007). The HBF underlies the southern half of Grand Pré though its northern boundary has not been well established. These rocks characteristically have low permeability and transmit water primarily through joints, although intergranular porosity in coarser grained units accounts for some groundwater storage. Well yields from HBF sediments are highly variable and range from 0.5–1000 igpm, with a mean of 24.7 igpm. Water quality is generally moderate to poor with high concentrations of Fe, Mn, salinity, and hardness being common. Elevated concentrations of U and As have been noted in wells located near the contact with slate of the Halifax Group

The Triassic Wolfville Formation is composed of highly permeable sandstone and conglomerate that transmit water primarily through intergranular pore space (Trescott 1968). Well yields vary from 1–450 igpm, with a mean of 77.8 igpm. Water quality is generally good (pH range from 6.0–6.5); where calcite is the dominant cement, elevated hardness has been noted. Elevated concentrations of U have been noted near the contact with slate of the Halifax Group (Ryan and O’Beirne-Ryan 2006).

Surficial deposits such as till, ice-contact drift, and out-wash deposits are common in the Annapolis-Cornwallis Valley (Trescott 1968) but do not comprise significant aquifers in the study area. In Grand Pré a few dug wells access local or perched aquifers located in sandier facies of the Lawrencetown Till; well yields are generally less than 40 igpm. Both surface water and groundwater in the Annapolis-Cornwallis Valley ultimately discharge into the Bay of Fundy (Trescott 1968) and groundwater movement in the study area is generally northward into the Minas Basin.

SAMPLING PROCEDURES AND ANALYTICAL METHODS

Two suites of groundwater samples were collected from wells in Grand Pré. Samples were collected in acid-washed 250 ml polyethylene bottles from plumbing-access points located up-flow of any treatment or filtration devices. All well locations were recorded using a hand-held WAAS-enabled GPS receiver. Samples were stored on ice and in the dark during transportation to the laboratory.

Suite #1 includes seventeen samples gathered in August, 2006. Suite #2 was gathered in November, 2006, and contains nine samples from nine of the seventeen wells sampled initially. Re-sampled wells were chosen based on initial results from suite #1 and the requirement for further geochemical analysis. In sample suite #2, the concentration of ferrous iron (Fe^{2+}) was measured immediately after sampling using a handheld Hach® (DR/870) colorimeter.

The pH of each sample was measured both in the field and at Acadia University immediately after returning from field sampling. Minimizing the time between sampling and measurement decreased the amount of gases lost and temperature changes that could alter the chemical equilibria of the water. Each sample was filtered through a 0.45 μm filter using a vacuum filtration unit. Filtering removed suspended particulate matter; most obvious of which was iron oxide (reddish-brown coating accumulated on filter surfaces). Samples that were to undergo cation analysis were acidified to a pH of 2 using concentrated nitric acid. Acidification and filtration minimized the dissolution of particulate matter and the formation of colloids in solution that could change the chemical equilibria of water samples between collection

and analysis (Deutsch 1997).

Cation analysis was performed at ACME Analytical Laboratories Ltd. in British Columbia. Sample duplicates were included in both suites to monitor data quality. All samples were analyzed for the concentrations of 72 cations using an Inductively Coupled Plasma Mass Spectrometer (ICP-MS). Major anion concentrations were measured in suite #2 using ICP-MS to provide data for a more detailed geochemical analysis. Alkalinity was measured in non-acidified samples from suite #2 by titration using 0.02 N H_2SO_4 (with an end-point pH of 4.5).

pE-pH monitoring

The pE of each sample was determined using an ideal aqueous solution assumption where all activity coefficients equal unity. This assumption was justifiable after ionic strength calculations (Faure 1998) revealed that samples were highly dilute, with ionic strengths between 4.88×10^{-3} and 1.02×10^{-2} . As a result, virtually all activity coefficients calculated using the Debye-Hückle equation were only negligibly different from one. Furthermore, the influence of complexation on the solubilities of the elements under consideration was also negligible, again precisely because of the low ligand concentrations in these dilute waters. These observations significantly simplify thermodynamic modeling of these aqueous systems.

To calculate the pE of each sample, the ΔG°_r for the equilibrium:



was used to determine the log K at 25°C. This log K was then adjusted using van t’Hoff’s equation to the measured temperature for each sample. Finally, the mass action equation:

$$(2) \quad \log K = -3\text{pH} - \text{pE} - \log a_{\text{Fe}^{2+}}$$

along with the measured pH’s and colorimetrically-derived Fe^{2+} concentrations were used to estimate the pE of each sample.

The calculated pE and pH values for each sample were plotted on pE-pH diagrams (Figs. 2, 3, and 4). These diagrams depict the stability fields of Fe, Mn, and U in natural waters at 8°C. The activities of Fe, Mn, and U used to obtain these diagrams were 10^{-6} , 10^{-6} , and 10^{-7} molal, respectively (close to the mean molalities observed in the samples), and this influenced the locations of stability boundaries on these diagrams.

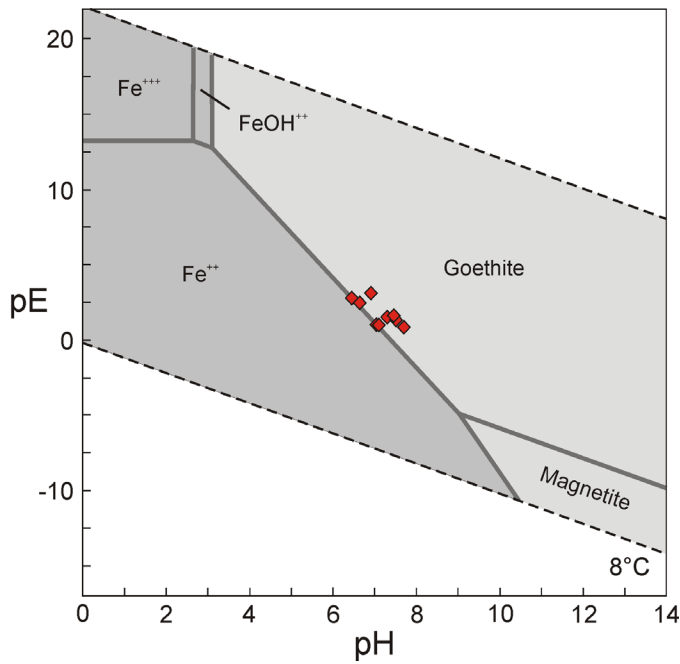


Fig. 2. pE-pH diagram illustrating the stability fields of goethite and soluble Fe^{2+} species at 8°C . Samples from suite #2 are plotted using measured pH and calculated pE values (Table 1).

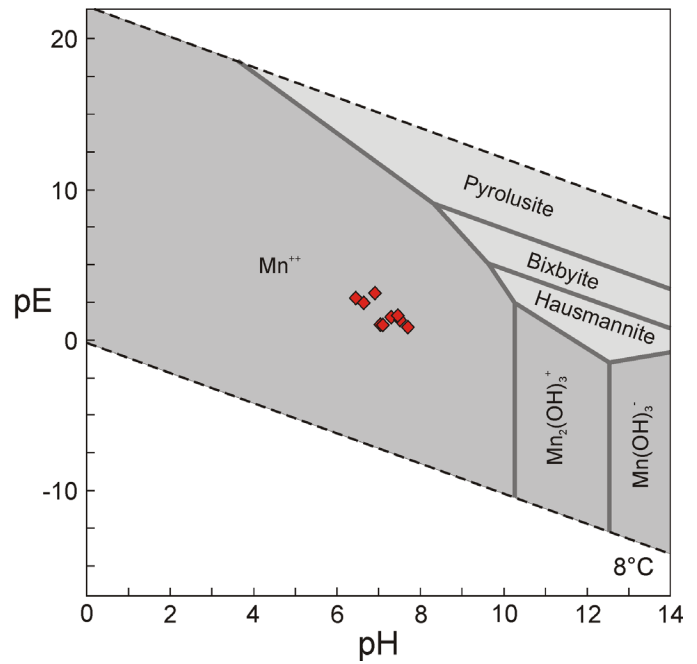


Fig. 3. pE-pH diagram illustrating the stability fields of pyrolusite and soluble Mn^{2+} species at 8°C . Samples from suite #2 are plotted using measured pH and calculated pE values (Table 1).

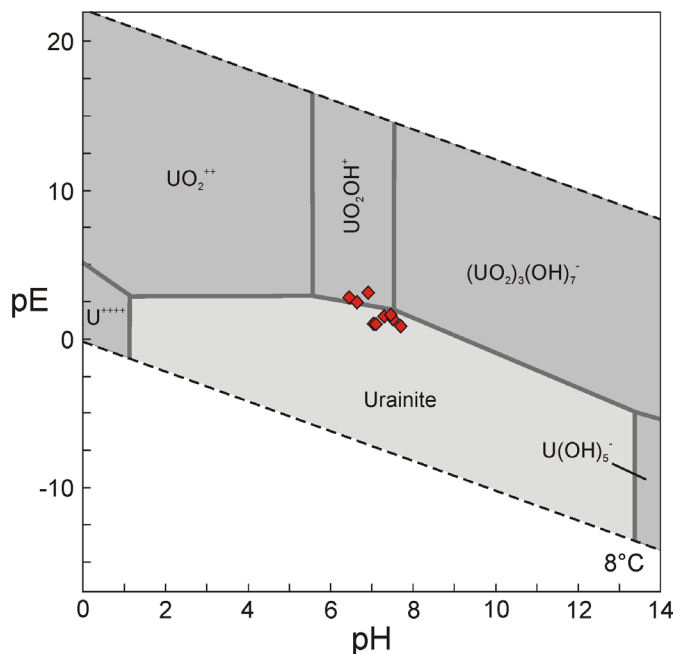


Fig. 4. pE-pH diagram illustrating the stability fields of uraninite and uranium-hydroxide species at 8°C . Samples from suite #2 are plotted using measured pH and calculated pE values (Table 1).

Table 1. The concentrations of Fe^{2+} (ppm), the pH of and pE of each sample in suite #2.

Sample	Fe^{2+} ppm	pH	pE
1	0.84	7.05	1.04
4	0.62	7.1	1.02
3	0.52	6.65	2.45
8	0.05	7.3	1.52
5	0.02	6.9	3.12
10	0.02	7.5	1.32
12	0.015	7.7	0.84
15	0.015	7.45	1.59
16	1.02	6.45	2.76

Piper trilinear plots

The Piper trilinear diagram is a useful tool in water-analysis interpretation as it helps to classify waters in terms of composition and this information can assist in determining the different geologic or hydrologic units through which groundwater flows (Hem 1992). All cation concentrations (Ca^{2+} , Mg^{2+} , Na^+ , and K^+) and most anion concentrations (SO_4^{2-} and Cl^-) required to construct the Piper trilinear diagram were included in the laboratory analysis of suite #2; only carbonate (CO_3^{2-}) and bicarbonate (HCO_3^-) concentrations were lacking. However, these concentrations were deduced through an indirect method using alkalinity measurements.

The laboratory analysis reported alkalinity in units of mg/L of CaCO_3 . This approach assumes that the carbonate ions present in the groundwater are completely responsible for the consumption of the hydrogen ions during H_2SO_4 titration (Deutsch 1997). This assumption may not be true if there are additional H^+ acceptors dissolved in solution [Equation 3]. As a result, the concentrations of non-carbonate species must be subtracted from alkalinity before determining the concentration of the carbonate species (Deutsch 1997):

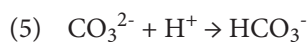
$$(3) \text{ alkalinity} = 2M_{\text{SO}_4^{2-}} + M_{\text{HSO}_4^-} + M_{\text{Cl}^-} + M_{\text{Br}^-} + M_{\text{NO}_3^-} + M_{\text{NO}_2^-} + 3M_{\text{PO}_4^{3-}} \\ + 2M_{\text{HPO}_4^{2-}} + M_{\text{H}_2\text{PO}_4^-} + 2M_{\text{CO}_3^{2-}} + M_{\text{HCO}_3^-}$$

The ability of non-carbonate species to contribute to alkalinity was determined to be negligible as they have concentrations that are considerably lower (by several orders of magnitude) than those of the carbonate species. As a result, the alkalinity of each sample is demonstrated to be essentially a function of the carbonate and bicarbonate concentrations alone. Carbonic acid has no effect on alkalinity as it has a charge balance of zero. Therefore, in these waters, we can assume that:

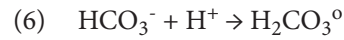
$$(4) \text{ alkalinity} = M_{\text{HCO}_3^-} + 2M_{\text{CO}_3^{2-}}$$

The moles of each carbonate species (CO_3^{2-} , HCO_3^- , and H_2CO_3^0) were then determined using pH and thermodynamic constraints. This determination was done via the following procedure:

(i) the observed pH's for each sample and the calculated log K's for the equations:



and:



were used to determine the log ratios of $(\text{CO}_3^{2-}/\text{HCO}_3^-) = R_A$ and $(\text{HCO}_3^-/\text{H}_2\text{CO}_3^0) = R_B$, using the Henderson-Hasselbalch (Po and Senozan 2001) equation;

(ii) then the equations:

$$(7) M_{\text{HCO}_3^-} = \frac{M_{\text{TCO}_3}}{1 + (2 \times R_1)}$$

$$(8) M_{\text{H}_2\text{CO}_3^0} = \frac{M_{\text{HCO}_3^-}}{R_2}$$

$$(9) M_{\text{H}_2\text{CO}_3^0} = \frac{M_{\text{HCO}_3^-}}{R_2}$$

were used to determine the molalities of carbonate and bicarbonate.

Once the molalities of CO_3^{2-} and HCO_3^- were determined, construction of a Piper trilinear diagram for samples from suite #2 could be achieved using Rockworks 2002[®] software.

RESULTS

Five of the 72 cations in the Grand Pré samples were present in concentrations that exceeded a Health Canada (2011) maximum allowable concentration (MAC) or aesthetic objective (AO) in suite #1 and again in suite #2 (excluding Pb; Table 2). These cations are U (exceeding MAC = 0.02 mg/L in 4 wells), Se (exceeding MAC = 0.01 mg/L in 4 wells), Fe (exceeding AO = 0.3 mg/L in 3 wells), Mn (exceeding AO = 0.05 mg/L in 12 wells), and Pb (exceeding MAC = 0.01 mg/L in 3 wells).

The concentrations of chloride (Cl^-), bromide (Br^-), sulphate (SO_4^{2-}), nitrate (NO_3^-), nitrite (NO_2^-), and phosphate (PO_4^{3-}) were below the limits listed in the Guidelines for Canadian Drinking Water Quality (Health Canada 2011). All concentrations of nitrite, phosphate, and bromide (excluding sample 5D) were below the detection limits (Table 3). Alkalinity ranged from 57 to 157 mg/L CaCO_3 ; the majority of the samples fell within the range 130 to 160 mg/L CaCO_3 (Table 3). The pH values of groundwater in Grand Pré ranged from 6.45 to 7.7.

Table 2. The concentrations (ppb) of cations that exceeded either an MAC or an AO listed in the Guidelines for Canadian Drinking Water Quality (Health Canada 2011).

Sample Number	Fe (ppb)	Mn (ppb)	Pbb (ppb)	Se (ppb)	U (ppb)
	AO = 300 ppb	AO = 50 ppb	MAC = 10 ppb	MAC = 10 ppb	MAC = 20 ppb
Suite #1					
1A	450	1740.74	48.6	1.1	9.64
2A	140	18.93	9.1	2.7	1.13
3A	311	938.83	9.3	4.4	3.03
4A	605	1293.38	0.6	0.7	1.35
5A	12	402.15	0.8	8.2	25.22
6A	106	291.5	1.8	1.5	2.08
7A	96	8.15	13.8	1.6	3.28
8A	29	107.08	15.6	8.1	2.65
9A	<10	204.36	0.6	10.5	9.87
10A	15	51.42	1.7	16.9	4.22
Re 10A	<10	51.04	1.7	16.8	4.28
11A	<10	12.3	2.1	27.7	23.72
12A	<10	28.43	54.1	15.1	38.58
13A	25	147.9	5.4	3.3	28.31
14A	27	288.24	0.5	3.8	13.27
15A	<10	31.17	0.4	4.8	1.9
16A	102	449.52	1.1	2.7	1.33
17A	32	58.99	5.2	<0.5	23.96
Suite #2					
1C	441	1972.67	0.4	0.6	17.03
3C	160	852.44	1.2	4.5	3.84
3E	162	773.47	0.8	4.3	3.56
4C	389	967.33	<0.1	1.2	2.46
5C	<10	408.71	0.2	7.3	50.79
8C	20	131.37	0.4	6.6	4.11
10C	26	57.8	<0.1	16.8	6.37
12C	10	1.3	2.1	2.1	10.93
Re 12C	<10	1.23	2	2.2	11.01
12E	12	0.86	2.8	2	11.09
15C	10	2282.23	0.3	6.1	3.82
16C	234	948.44	1.3	2.9	1.35
*DL	10	0.05	0.1	0.5	0.02

*DL = detection limit as defined by ACME Analytical Laboratories Ltd.

Distribution and redox trends

The concentrations of cations measured in samples from suite #1 were compared to the locations of the wells using the GPS location of each well. A digital elevation model (DEM) was superimposed on the grids in order to demon-

strate surface water flow direction.

Distribution trends of uranium were determined by plotting circles with diameters sized proportional to concentration over each associated well location (bubbleplots). The highest concentrations (largest circles) are clustered together in the northwestern part of the study area (Fig. 5). This distribution suggests the possibility of a local source of U affecting groundwater in this area or local redox conditions contributing to the dissolution of U by groundwater. A plot of Fe and Mn concentrations indicate a roughly inverse relationship with U concentrations (Fig. 6).

The solubility of ions in groundwater is influenced by changes in the redox potential in the aquifer. Iron and Mn ions dissolve in reducing environments principally into the species Fe^{2+} and Mn^{2+} , and precipitate in oxidizing environments as $\text{Fe}(\text{OH})_3$ and $\text{Mn}(\text{OH})_2$ (Hem 1992). In contrast, U dissolves in oxidizing environments, predominantly in the form of the uranyl ion (UO_2^{2+}), and precipitates in reducing environments as UO_2 (uraninite) (Hem 1992). It is therefore likely that U is present in elevated concentrations in oxidizing conditions, whereas Fe and Mn are present in elevated concentrations in reducing environments. Consequently, distribution trends reveal that redox conditions may be predominantly responsible for the dissolution or precipitation of U, Fe, and Mn in groundwaters underlying Grand Pré.

Cation availability

Iron is an appropriate indicator of redox conditions in Grand Pré because it is saturated in groundwater (iron-oxy-hydroxide precipitates were removed from all samples during filtration). Iron reacts predictably in oxidizing and reducing conditions and is present in high concentrations in environments where reduction of ferri-oxy-hydroxides is occurring (Hem 1992). In Grand Pré, the filtrate colour suggests that goethite and hematite precipitated. If these mineral are present in suspension, elevated Fe concentrations indicate a reducing environment in Grand Pré groundwater, and lower Fe concentrations indicate an oxidizing environment.

Uranium is a trace metal and is not as abundant as Fe in natural groundwater (Hem 1992). At Grand Pré, U occurs in low concentrations where Fe concentrations are elevated (suggesting a reducing environment), but occurs at both high and low concentrations where Fe concentrations are low (suggesting an oxidizing environment). These variable concentrations of U in oxidized groundwaters may be explained by the presence or absence of U in the host formation.

Table 3. The concentrations (ppb) of anions, alkalinity (mg/L CaCO₃), and pH values, from analysis of samples in suite 2.

Sample Number	Cl ⁻ ppm	NO ₂ ⁻ ppm	Br ⁻ ppm	NO ₃ ⁻ ppm	SO ₄ ²⁻ ppm	PO ₄ ³⁻ ppm	Alkalinity mg/L CaCO ₃
1D	121.3	<0.05	<0.05	11.88	19.5	<0.05	100
3D	117.4	<0.05	<0.05	6.48	20.9	<0.05	57
3F	119.2	<0.05	<0.05	6.71	18	<0.05	57
4D	152.4	<0.05	<0.05	0.29	19.3	<0.05	145
5D	167.7	<0.05	0.1	0.14	18.2	<0.05	135
8D	91.3	<0.05	<0.05	3.3	20.3	<0.05	147
10D	88.9	<0.05	<0.05	0.5	19.3	<0.05	147
12D	10.5	<0.05	<0.05	21.89	23.3	<0.05	128
12F	10.2	<0.05	<0.05	22.17	23.1	<0.05	128
Re 12F	10.2	<0.05	<0.05	21.35	23.9	<0.05	128
15D	53.9	<0.05	<0.05	3.36	26	<0.05	157
16D	66.9	<0.05	<0.05	<0.05	14.8	<0.05	138
*DL	0.2	0.05	0.05	0.05	0.1	0.05	1

*DL = detection limit as defined by ACME Analytical Laboratories Ltd.

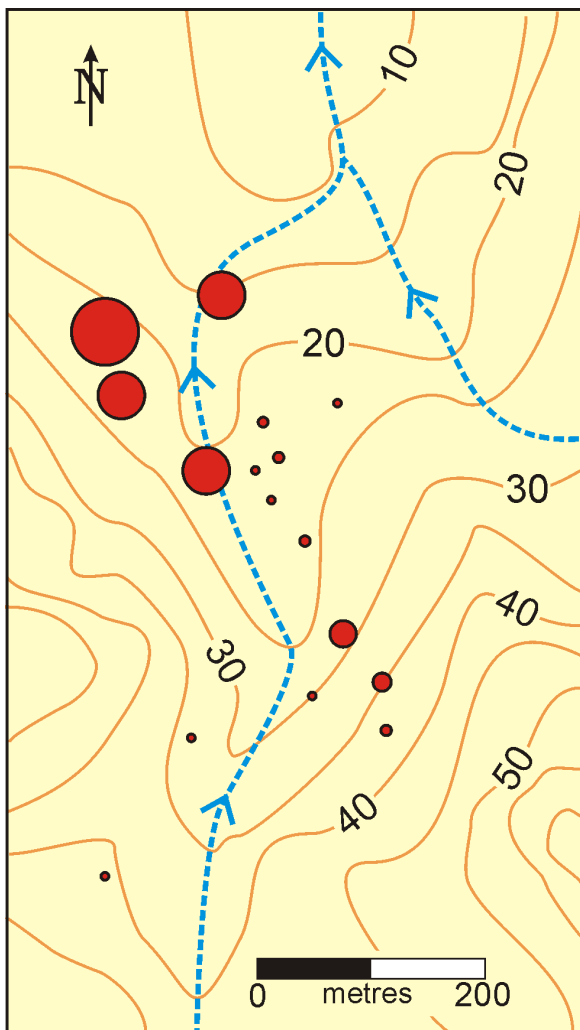


Fig. 5. The distribution of uranium in wells. Red circles are sized relative to the concentration in each well, ranging from 1.13 ppb to 38.58 ppb. Contour intervals in metres.

pE-pH diagrams

The calculated pE values for Grand Pré groundwaters fall within a range of 0.84–3.12, and are listed in Table 1 along with the Fe²⁺ concentrations and pH measurements of sample suite #2 used to determine them. The pE-pH stability fields for Fe are presented in Figure 2. The data points plot close to the boundary between the stability fields of goethite and dissolved ferrous iron, consistent with these waters being saturated with respect to goethite. These results suggest that the Grand Pré well waters are likely derived from goethite-bearing aquifers in the Horton Group or Wolfville Formation, as discussed above.

Figure 3 presents a pE-pH diagram for Mn. The data points plot well within the Mn²⁺ stability field, indicating that Mn is very undersaturated relative to pyrolusite (MnO₂; Mn concentrations are much lower than 10⁻⁶ M), and is not likely to become saturated unless highly oxidizing conditions are encountered. Accordingly, no history of Mn stains on residential plumbing is reported in the Grand Pré area.

The pE-pH stability fields of U minerals and species that could be present in Grand Pré groundwaters are presented in Figure 4. The data points bracket the stability field boundary between uraninite and uranyl-hydroxide complexes. This distribution indicates that some of these waters are likely to be saturated with respect to uraninite, and may also be derived from an aquifer containing uraninite. Be-

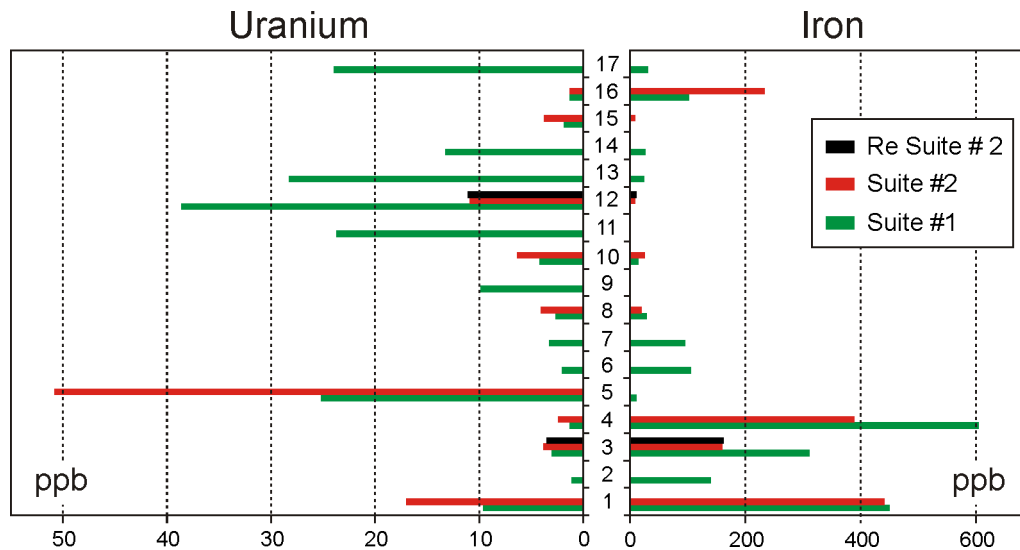


Fig. 6. The concentrations of iron and uranium (ppb) from suite #1 and suite #2. Note that manganese follows the same general trends as iron.

cause uraninite is a principle U ore mineral, this conclusion has significant health implications. It could suggest that the host rocks to some of the Grand Pré well waters contain at least some uranium-bearing minerals.

Piper trilinear plots

The triangular field displaying the cation concentrations (Fig. 7, left side) reveals that sample waters are dominated by either Ca^{2+} or Na^+ ions. Similarly, the triangular field displaying the anion concentrations reveals that the samples are dominated by Cl^- , with the exception of samples 12a, 12b and 12c, which are dominated by carbonate and bicarbonate. The diamond field depicting the combined water chemistry indicates that the groundwater is divisible into three water types: a calcium carbonate water type (CaCO_3 ; samples 12a, 12b, and 12c), a sodium chloride water type (NaCl ; samples 3a, 3b, 5 and 16) and a calcium chloride water type (CaCl_2 ; samples 1, 4, 8, 10, and 15) (Fig. 7; Table 4).

Well waters that are dominated by high Ca concentrations are likely derived from Ca-cemented (calcite, dolomite, gypsum and/or anhydrite) sedimentary rocks within both the Horton Group and Wolfville Formation (Martel and Gibling 1996). Wells 1, 4, 8, 10, 12, and 15 may be drawing water from such sedimentary rocks.

Grand Pré is bordered directly by the Minas Basin, and as a result, the ocean is a predicted cause of NaCl -type water. If samples 3a, 3b, 5, and 16 are influenced by ocean water they would be expected to have a pH similar to that of ocean water (pH = 8). However, as compared to the other samples on the Piper trilinear diagram, the pH values of the NaCl -type water samples are furthest from a pH of 8, and thus the

source for this water is likely not the ocean.

Apart from saltwater influence, chloride ions contributing to NaCl and CaCl_2 water types may originate from various sources. Clay beds in the shales of the Horton Group may be acting as semi-permeable membranes retarding the passage of chloride ions and causing them to become concentrated in one area (Hem 1992). This situation may occur because chloride ions are larger than most other ions and are unable to penetrate interstitial pore spaces within clays. Also, calcium ions may be exchanged for sodium ions on mineral surfaces in an ion-exchange process resulting in CaCl_2 -dominated waters (Hem 1992).

Trilinear diagrams are often used to demonstrate a change in water chemistry over time, and as a result indicate the direction of flow. No trends are apparent in water chemistry and flow direction to suggest such water composition evolution in the Grand Pré area.

DISCUSSION

Weathered granite from the South Mountain Batholith and arkosic arenite and shale from the Horton Group have been associated with the release of U into groundwater and may be a regional source of U in the Grand Pré area (O'Beirne-Ryan and Zentilli 2003; Kronfeld *et al.* 2004; Ryan and O'Beirne-Ryan 2006). Ryan and O'Beirne-Ryan (2006) noted that in the Windsor region, U enrichment in the HBF is related to reduction-oxidation fronts in the sandstone. The U is associated with carbon-rich horizons and disseminated pyrite in the sandstone and shale, the oxidation of which reduces the valence state of U to an insoluble

U^{4+} state, causing its deposition at or near pyrite and/or organic carbon debris.

The contact between the Horton Group and the Wolfville Formation lies north of Highway 101 but is poorly constrained by both outcrop and subsurface data (Moore *et al.* 2000; White 2010). The erosional contact marks a significant change in stratigraphy and rock composition, and is likely to affect the chemistry and composition of the groundwater that flows through it. Interbedded carbon-rich shale and siltstone of the HBF likely produce a reduced groundwater environment, and the clean, porous sandstone (mature quartz arenite) in the Wolfville Formation produce an oxidized groundwater environment. This stratigraphic dichotomy may explain the different groundwater environments (oxidized and reduced) observed in the Grand Pré area.

The higher concentrations of U are located in the northernmost wells in the sample area (Fig. 5), the area most likely underlain by the Wolfville Formation (Fig. 1). Groundwater flowing through reducing conditions in the Horton Group is characterized by low U concentrations and high Fe and Mn concentrations (e.g., samples 15 and 16). When water flows into the Wolfville Formation, oxidized conditions are encountered (Fig. 8). This change results in the precipitation of Fe and Mn and the dissolution of U (e.g., samples 11 and 12).

This model presents a paradox that is supported by the data, and is of importance to well owners. Well water that is aesthetically undesirable due to high concentrations of Fe and Mn may pose a lower health risk than water with low Fe and Mn concentrations that is more aesthetically desirable but likely has higher U concentrations.

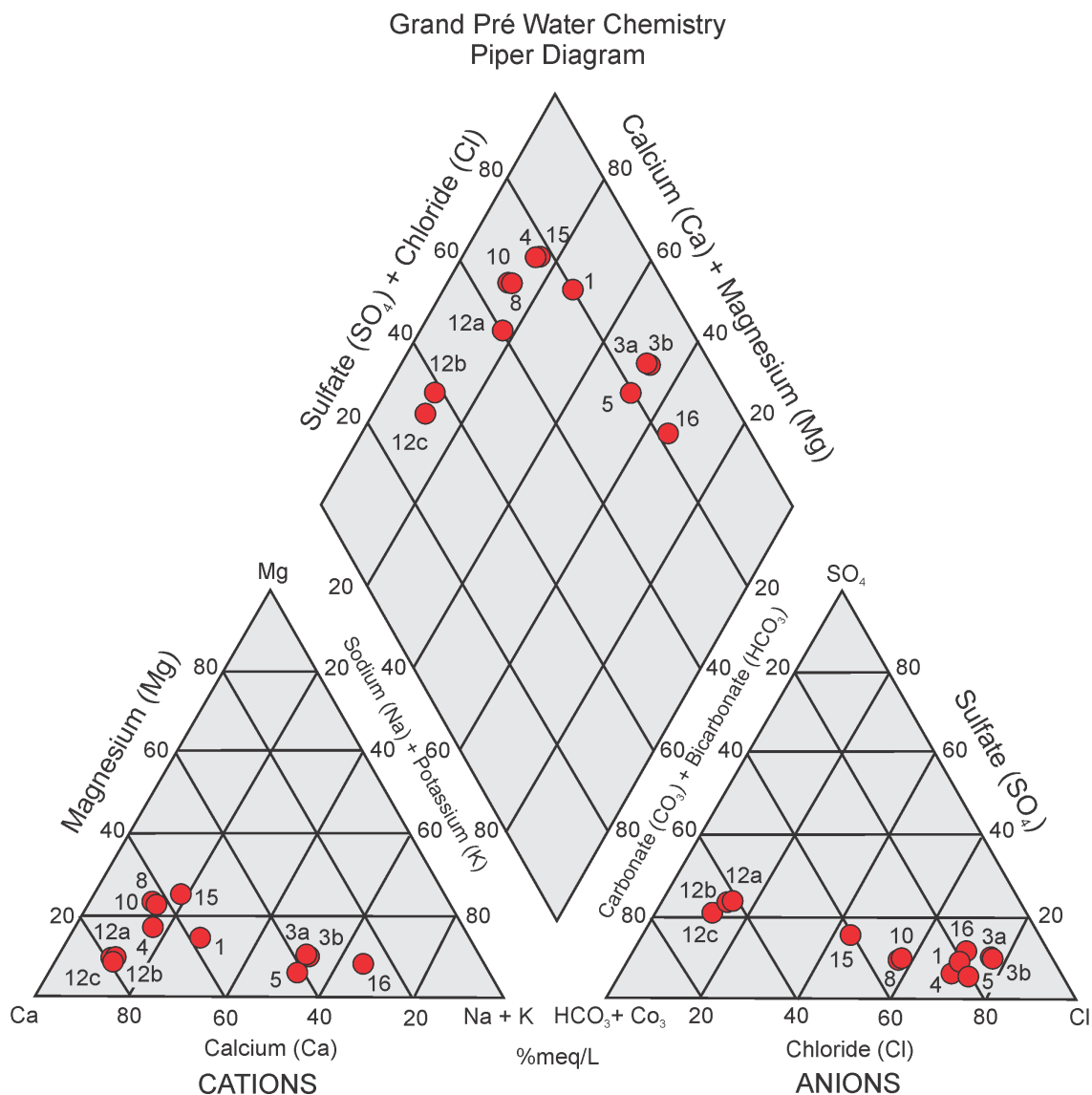


Fig. 7. A trilinear diagram indicating the geochemical environment in Grand Pré observed in November 2006, derived using samples from suite #2.

Table 4. Cation concentrations used in Figure 7. Samples are from suite #2

Sample	Ca ppb	K ppb	Mg ppb	Na ppb
1C	76005	3403	11985	38958
3C	40677	5845	6932	61626
3E	37973	5341	6359	59069
4C	114121	3672	18462	29649
5C	69529	6103	6654	95909
8C	85635	2572	19096	19190
10C	85890	2718	19955	17483
12C	68325	1648	5368	10278
Re 12C	67735	1671	5268	10188
12E	67971	1671	5268	10188
15C	67403	5599	18624	21153
16C	28496	4356	5843	77335

CONCLUSIONS

Significant scope exists for continued investigation of groundwater quality and the occurrence of U in the Grand Pré region. The effect of well depth and seasonal variations on groundwater chemistry should be examined. Also, determination of the composition of the lithologies from which

samples were derived and locating the contact between the Horton Group and the Wolfville Formation would provide further insight into the dominant influences on groundwater in the study area.

The health risks associated with the consumption of Grand Pré groundwater were not within the scope of this study. Unpredictable and poorly understood environmental influences on groundwater make predictions unrealistic. Importantly, this study has determined that residents and industrial users in the Grand Pré area will likely have to treat water with high Fe and Mn concentrations in order to obtain water that poses the lower health risks (i.e., low U concentrations).

ACKNOWLEDGEMENTS

I. Spooner and C. Stanley acknowledge support from the National Science and Engineering Research Council. The authors also gratefully acknowledge the support of ACME Laboratories, Vancouver, Canada. DEM data were compiled by Amanda Lavers, Acadia University, in 2006. Grant Ferguson and an anonymous reviewer provided constructive suggestions on the manuscript.

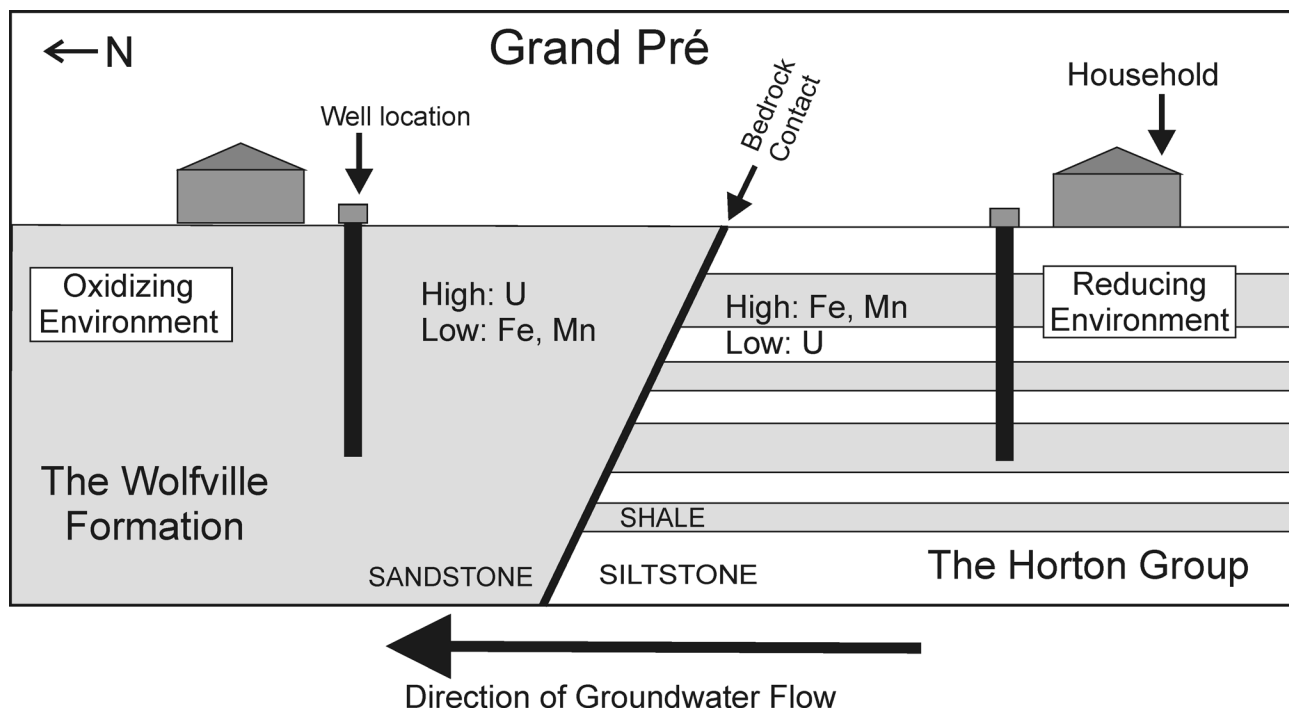


Fig. 8. A simplified representation of water flowing through the Horton Group into the Wolfville Formation and the different redox conditions that may be encountered.

REFERENCES

- Deutsch, W.J. 1997. Groundwater geochemistry: fundamentals and applications to contamination. Lewis Publishers, Boca Raton, Florida, 149 p.
- Faure, G. 1998. Principles and applications of geochemistry (2nd ed.). Upper Saddle River, NJ: Prentice-Hall, 600 p.
- Ferguson, S.A. 1983. Geological Maps of the Hantsport Area. Nova Scotia Department of Mines and Energy, Open File Report ME 557, 4 maps, scale 1:10 000.
- Health Canada. 2011. Guidelines for Canadian drinking water quality. URL < http://www.hc-sc.gc.ca/ewh-semt/pubs/water-eau/index-eng.php#tech_doc > September, 2011.
- Hem, J.D. 1992. Study and interpretation of the chemical characteristics of natural water (3rd ed.). United States Geological Water Supply Paper 2254. Washington, DC: U.S. Government Printing Office, 263 p.
- Kronfeld, J., Godfrey-Smith, D.I., Johannessen, D., and Zentilli, M. 2004. Uranium series isotopes in the Avon Valley, Nova Scotia. *Journal of Environmental Radioactivity*, 73, pp. 335–352. <http://dx.doi.org/10.1016/j.jenvrad.2003.11.002>
- Leleu, S., Hartley, A.J., and Williams, B.P.J. 2009. Large-Scale Alluvial Architecture and Correlation in a Triassic Pebble Braided River System, Lower Wolfville Formation (Fundy Basin, Nova Scotia, Canada). *Journal of Sedimentary Research*; 79, pp. 265–286. <http://dx.doi.org/10.2110/jsr.2009.034>
- MacDonald, M.A. 2001. Geology of the South Mountain Batholith, southwestern Nova Scotia. Nova Scotia Department of Natural Resources, Minerals and Energy Branch Open File Report ME 2001-2, 281 p.
- Martel, T., and Gibling, M.R. 1996. Stratigraphy and tectonic history of the Upper Devonian to Lower Carboniferous Horton Bluff Formation, Nova Scotia. *Atlantic Geology*, 32, pp. 13–38.
- Moore, R.G., and Ferguson, S.A., 1986. Geological Map of the Windsor Area, Nova Scotia Nova Scotia Department of Mines and Energy, Map 86-2, scale 1:25 000.
- Moore, R.G., Ferguson, S.A., Boehner, R.C., and Kennedy, C.M. 2000. Preliminary Geological Map of the Wolfville/Windsor Area, Hants and Kings Counties, Nova Scotia [21H/01 and Parts of 21A/16C and D]. Nova Scotia Department of Natural Resources Open File Map 2000-3, scale 1:50 000.
- Nova Scotia Department of Environment and Labour, 2005. Water and Wastewater Facilities and Public Drinking Water Supplies Regulations made under Sections 66 and 110 of the Environment Act. Province of Nova Scotia. URL <http://www.gov.ns.ca/just/regulations/regs/envwaste.htm>, March, 2007.
- O'Beirne-Ryan, A.M., and Zentilli, M. 2003. Paleoweathered surfaces on granitoids of southern Nova Scotia: paleoenvironmental implications of saprolites. *Canadian Journal of Earth Sciences*, 40, pp. 805–817. <http://dx.doi.org/10.1139/e03-016>
- O'Beirne-Ryan, A.M., and Zentilli M. 2006. Weathering of Devonian monzogranites as recorded in the geochemistry of saprolites from the South Mountain Batholith, Nova Scotia, Canada. *Atlantic Geology*, 42, pp. 151–157.
- Page, K.D. 1999. Uranium, radium and radon in streams, domestic well waters, and soils: a GIS analysis of geological, geochemical and geophysical relationships. Unpublished B.Sc. Honours Thesis, Dalhousie University, Halifax, Nova Scotia, Canada, 298 p.
- Po, H.N., and Senozan, N.M. 2001. The Henderson-Hasselbalch Equation: It's History and Limitations. *Journal of Chemical Education*, 78, pp. 1499–1505. <http://dx.doi.org/10.1021/ed078p1499>
- Rivard, C., Deblonde, C., Boivin, R., Bolduc, A., Paradis, S.J., Paradis, D., Liao, S., Gauthier, M -J., Blackmore, A., Trépanier, S., Castonguay, S., Drage, J., Michaud, Y. 2007. Canadian groundwater inventory: hydrogeological atlas of the Annapolis Valley, Nova Scotia. Geological Survey of Canada, Open File 5541, 132 p.
- Ryan, R.J. 1998. The Falls Brook Quarry near Three Mile Plains, Windsor, Nova Scotia. *In* Clastic Carboniferous Sections of the Minas Basin and Cumberland Basins in Nova Scotia. *Edited by* J.H. Calder, R.C. Boehner, D.E. Brown, M. Gibling, P.K. Mukhophyay, R.J. Ryan, and D. Skilliter. Nova Scotia Department of Natural Resources, Minerals and Energy Branch Open File report ME-1998-5, pp. 15–24.
- Ryan, R.J., and O'Beirne-Ryan, A.M. 2006. Preliminary Report on the Origin of Uranium Occurrences in the Horton Group of the Windsor Area, Nova Scotia. *In* Mineral Resources Branch, Report of Activities 2006. Nova Scotia Department of Natural Resources, Report ME 2007-1, pp. 137–157.
- Stea, R.R., Conley, H., and Brown, Y. 1992. Surficial Geology of the Province of Nova Scotia. Nova Scotia Department of Natural Resources, Mines and Energy Branch. Map 92-3, scale 1:50 000.
- Trescott, P.C. 1968. Groundwater resources and hydrology of the Annapolis-Cornwallis Valley, Nova Scotia. Nova Scotia Department of Mines. Memoir 6, 159 p.
- White, C.E. 2010. Pre-Carboniferous bedrock geology of the Annapolis Valley area (NTS 21A/14, 15, and 16; 21H/01 and 02), southern Nova Scotia. *In* Mineral Resources Branch, Report of Activities 2009. *Edited by* D.R. MacDonald. Nova Scotia Department of Natural Resources, Report ME 2010-1, pp. 137–155.
- Williams, H. 1995. Introduction. *In* Geology of the Appalachian Orogeny in Canada and Greenland. *Edited by* H. Williams. Geological Survey of Canada, Geology of Canada, 6, p. 1–18.

Editorial responsibility Sandra M. Barr