

Back Matter

Volume 76, 2012

URI : <https://id.erudit.org/iderudit/mcr76bm01>

[Aller au sommaire du numéro](#)

Éditeur(s)

National Museums of Canada

ISSN

0316-1854 (imprimé)

0000-0000 (numérique)

[Découvrir la revue](#)

Citer ce document

(2012). Back Matter. *Material Culture Review*, 76, 125–128.

Winterthur Portfolio

A Journal of American
Material Culture

*Reveals America's past through
its objects*

Winterthur Portfolio is committed to fostering knowledge of the American past by publishing articles on material culture and the historical contexts within which American artifacts developed. The journal strives to present articles that critically engage the disciplines of art history, social and cultural history, cultural geography, ethnology, historical archaeology, folklife studies, and literature.

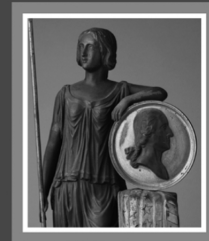
Audience

Historians, including teachers and students of American studies and art history; museum curators; anthropologists; and teachers and students interested in decorative arts, folk culture, architectural studies, and historical archaeology.

Winterthur Portfolio

A Journal of American Material Culture

Volume 46, Number 1 Spring 2012



Executive Editor: Elizabeth Milroy

Three issues/year
ISSN: 0084-0416
E-ISSN: 1545-6927

2013 Individual Subscription Rates:

Electronic + Print, \$56
Print-only, \$42
Electronic-only, \$41
CAA or ARLIS/NA Member (Electronic + Print), \$49
Student (Electronic-only), \$28

To Subscribe:

Online: www.journals.uchicago.edu/WP
Phone: 1 (877) 705-1878
(U.S. & Canada, toll-free)
1 (773) 753-3347 (International)

Individual subscription rates valid through December 31, 2013. Additional shipping and taxes applied to international orders.



CHICAGO JOURNALS

www.journals.uchicago.edu

Museum Management and Curatorship

Editor-in-Chief:

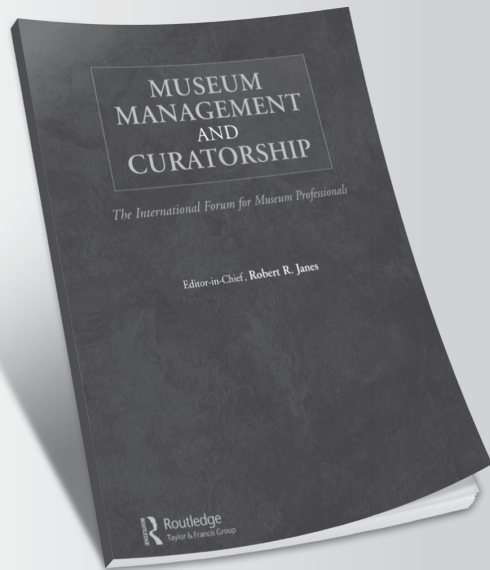
Robert R. Janes, *Canmore, Alberta, Canada*

A peer-reviewed international journal that examines current issues and developments in museum practice.

MMC encourages a continuous reassessment of collections management, administration, archives, communications, conservation, diversity, ethics, globalisation, governance, leadership, management, purpose, public service, technology and social responsibility.

Get **14 days free access** to ***Museum Management and Curatorship*** included in the Conservation, Heritage and Archives Collection, simply visit:
www.tandfonline.com/r/museum-heritage

You will need to log in or register



Submit to the journal

Museum Management and Curatorship considers all manuscripts on the strict condition that they have been submitted only to ***Museum Management and Curatorship***.

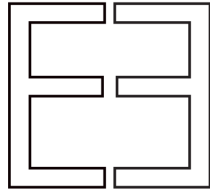
Papers for consideration should be sent to Robert R. Janes at eic.mmc@telus.net

Find out more at:

www.tandfonline.com/rmmc

www.tandfonline.com/rmmc

Routledge
**OPEN
SELECT**



Ethnologia Europaea

Journal of European Ethnology

Published by Museum Tusulanum Press
University of Copenhagen, Denmark



Single issue

retail \$26 · €20
online \$21 · €16

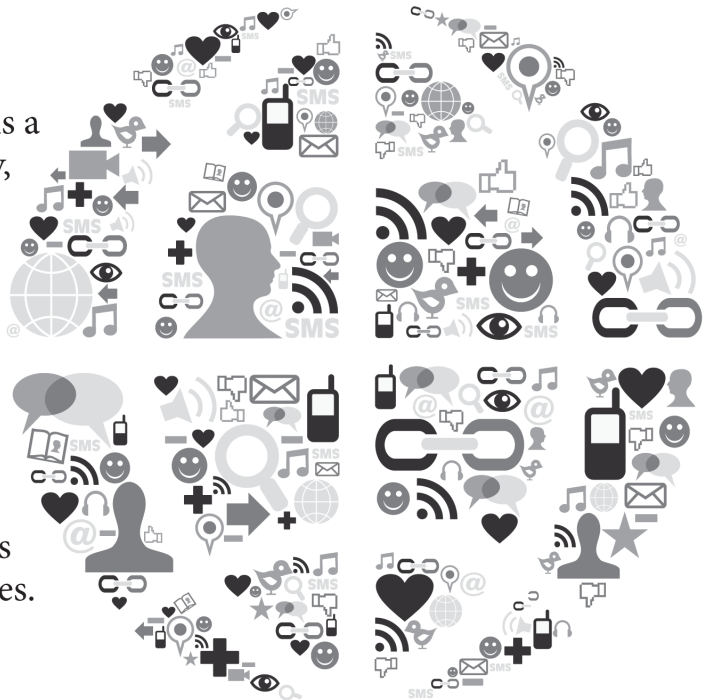
Yearly subscription

individuals \$41 · €32
institutions \$51 · €40

Available in print or online

For more information, please write to info@mtp.dk

Ethnologia Europaea is a lively and interdisciplinary, peer-reviewed journal with a focus on European cultures and societies. It carries material of great interest not only for European ethnologists and anthropologists but also for sociologists, social historians and scholars involved in cultural studies.



MUSEUM TUSULANUM PRESS
UNIVERSITY OF COPENHAGEN

MUSEUM TUSULANUM PRESS
Birketinget 6
2300 København S
Denmark
+45 3234 1414
order@mtp.dk | info@mtp.dk
mtp.dk

Material Culture Review

Material Culture Review provides a venue for refereed articles and research reports encompassing a range of approaches to interpreting culture through an analysis of people's relationships to their material world. Critical reviews of books, exhibitions and historic sites, artifact studies and reports on collections encourage the use of material evidence in understanding historical change and continuity. *Material Culture Review* is published twice a year.

MCR is distributed to more than 250 universities, research institutes, museums and libraries, in 20 countries. It is indexed in *America: History and Life*, *Journal of American History*, *Technology and Culture's* "Current Bibliography in the History of Technology" and *Annual Bibliography of Ontario History*. *MCR* is also indexed on the CHIP database, available through the Canadian Heritage Information Network (CHIN).

Subscription Rates

Canada / U.S. / International / Electronic
Individuals: 50 / 55 / 60 / 45
Institutions: 65 / 70 / 75 / 60
Students: 35 / 40 / 45 / 30

Check the websites for the most up-to-date subscription information: <http://culture.cbu.ca> and <http://journals.hil.unb.ca/php/MCR>

Cheques or money orders should be made payable to Cape Breton University (MCR). Please allow four weeks for back orders. Subscriptions and related correspondence should be addressed to:

Material Culture Review
Cape Breton University
P.O. Box 5300
Sydney, Nova Scotia
B1P 6L2

Subscription requests may be emailed to: mcr_rcm@cbu.ca or mailed to the above address.

Submission of Manuscripts

Correspondence concerning contributions, author guidelines and editorial matters should be addressed to the Editor, *Material Culture Review*, at the above address.

Revue de la culture matérielle

La *Revue de la culture matérielle* publie de manière sélective des articles de référence et des notes de recherche recouvrant un vaste éventail d'approches de l'interprétation de la culture à travers l'analyse des relations des gens avec leur monde matériel. Des comptes rendus d'ouvrages, d'expositions et de sites historiques, des études sur les artefacts et des rapports de recherche sur les collections d'objets privilégient l'interprétation du monde matériel en tant que moyen de comprendre le changement et la continuité historique. La *Revue* paraît deux fois par an.

La *Revue* est envoyée à plus de 250 universités, instituts de recherche, musées et bibliothèques dans 20 pays. Elle est répertoriée dans *America: History and Life*, *Journal of American History*, dans la « Current Bibliography in the History of Technology » publiée dans *Technology and Culture*, et dans *Annual Bibliography of Ontario History*. Elle figure également dans la base de données CHIP, accessible par l'entremise du Réseau canadien d'information sur le patrimoine (RCIP).

Tarifs d'abonnement

Canada / É.U. / International / Électronique
Particuliers : 50 / 55 / 60 / 40
Institutions : 65 / 70 / 75 / 45
Étudiants : 35 / 40 / 45 / 30

Veuillez consulter les sites Internet pour les informations les plus récentes au sujet des abonnements: <http://culture.cbu.ca> and <http://journals.hil.unb.ca/php/MCR>

Les chèques ou mandats postaux doivent être rédigés à l'ordre de Cape Breton University (MCR). Il faut compter quatre semaines pour la livraison des anciens numéros. Toute correspondance au sujet des abonnements doit être envoyée à l'adresse suivante:

Revue de la culture matérielle
Cape Breton University
P.O. Box 5300
Sydney, Nova Scotia
B1P 6L2

Les demandes d'abonnement doivent être adressées à l'adresse courriel : mcr_rcm@cbu.ca ou envoyées par la poste à l'adresse ci-dessus.

Présentation des manuscrits

Toute correspondance concernant les articles ou leur présentation, ainsi que les questions rédactionnelles, doit être adressée au rédacteur, *Revue de la culture matérielle*, à l'adresse mentionnée plus haut.